

HISTORICAL SOCIETY OF SA PUBLICATIONS

Journal

The *Journal of the Historical Society of South Australia* has appeared annually since 1975, with the exception of 1978 and 1980 when there were two issues. Back issues of all numbers except 1, 4, 9 and 10 are available at \$12.00 each (postage included). *Note however that stocks of some issues are running low.*

The contents of each journal are listed in the 'South Australian History in Journals' guidesheets included in Newsletters No's 77 (July 1988) and 79 (November 1988).

Newsletter

Back issues of more recent years' issues are available at \$1.00 each.

Guidesheets

These leaflets are made available gratis by the Society as a community service to promote history beyond its membership. They are issued as supplements to its Newsletters and additional copies are normally available in the Mortlock Library and the History Trust head office.

- No. 1 South Australian Local History 1. Guides, Indexes & Bibliographies (1978, out of print)
- No. 2 Good Reading in South Australian History (Revised edition 1987)
- No. 3 South Australian History in Journals—A Select List of Articles (1981)
- No. 4 Making History (1988)
- No. 5 South Australian History in Journals—2. A Select List of Articles (1988)
- No. 6 More Good Reading in South Australian History (1992)

Occasional Paper

E.J. & J.R. Robbins *A Glossary of Local Government Areas in South Australia 1840-1985* (1987) \$3.00 + \$1.00 postage

Joint Publications

S. Marsden & R. Nicol (eds) *The Politics of Heritage* (1990) [with the History Trust of S.A.] \$7.50 + \$1 postage. Available direct from the History Trust only.

various *South Australian Gazette and Colonial Register* A facsimile reproduction of volume 1, 18 June 1836 to 29 December 1838. (1988) [in association with the S.A. Government Printer] \$25 (limp) or \$75 (hard back). Available direct from the Government Printer and selected Adelaide bookshops.

'Insights' Series

R. Nicol & B. Samuels (eds) *Insights into South Australian History volume one: Selected articles from the Journal of the Historical Society of South Australia* (1992) \$14 postage paid. \$12 for orders of 5 or more.

The Historical Society of South Australia Inc.

Newsletter No. 100 May 1992



Registered by Australia Post
Publication No. SBH 1254

THE HISTORICAL SOCIETY OF SOUTH AUSTRALIA INC.
Institute Building, 122 Kintore Avenue, Adelaide 5000

OBJECTS

- (a) to arouse interest in and to promote the study and discussion of history, especially South Australian and Australian history
- (b) to promote the collection, preservation and classification of source material of all kinds relating to South Australian and Australian history
- (c) to publish historical records and articles
- (d) to promote the interchange of information among members of the Society by lectures, readings, discussions, field trips and exhibitions
- (e) to co-operate with similar societies throughout Australia
- (f) to do all such things as are conducive or incidental to the attainment of any of the above objects

COUNCIL

| | |
|------------------------------|---|
| PATRON: | Sir Walter Crocker, K.B.E |
| PRESIDENT: | Dr R.P.J. Nicol 207 7556 (w), 297 9844 (h) |
| VICE-PRESIDENT: | Mr B.J. Samuels 223 8807 (w), 47 2429 (h) |
| SECRETARY: | Ms M. Dunshore 381 7429 (h) |
| TREASURER: | Mrs A. Huckel 277 2953 (a h) |
| MEMBERSHIP SECRETARY: | Mrs E. Ulbrich |
| JOURNAL EDITOR: | Dr J.D. Playford |
| MEMBERS: | Mr H. Angas Mr D. Cornish Mr R.M. Gibbs, A.M. Mr M. Keain Mr J. Loudon Ms P. Payne Mr W. Stacy Ms P. Sumerling |
| NEWSLETTER EDITOR: | Dr I.A. Harmstorf |

FOUNDED IN 1974

Cover Illustration: Rundle Street, north corner, Adelaide in the 1870s

FORTHCOMING EVENTS

Venue: State Library Lecture Theatre
(Corner Kintore Avenue and North Tce., Adelaide)
Enter from Kintore Avenue.

Friday 5 June 1992 at 8p.m.

Dr. P.W. Allen:

A Sherlock Holmes Approach to Dr Watson.

Dr Archibald Watson claimed to have been born 'under a bullock dray' at Tarcutta, NSW on 27 July 1849. He died while watching the waning tide of Torres Strait from the verandah of the Federal Hotel, Thursday Island, on 30 June 1940. During his 91 years, he was a Melbourne schoolboy, South Seas adventurer, international student, linguist, anatomist, surgeon, pathologist, inspiring teacher, soldier, explorer, botanist, World traveller, motor cyclist, fisherman and the first medical professor at the University of Adelaide. In his youth he sailed with 'blackbirders'.

Watson left enough clues to allow some reconstruction of the character of the man H.R. Marston described as 'the last of the individualists'.

July Meeting

Venue: See Below

Change of Venue and Special Conditions for the July Meeting:

This meeting will be held at the State Bank. Entry will be from 87 King William St., to the right of the automatic teller machine. All members attending will need to **BOOK IN ADVANCE** with the secretary, Maria Dunshare (Ph. 381 7429) so that a list of names can be given to the bank. **MEMBERS SHOULD MEET OUTSIDE THE BANK AT 7.50 p.m.** So that we can enter as a group.

If for any reason you forget to book with the secretary you will still be admitted if you enter with the group. The watchman (press the button to summon) will only admit latecomers if their name is on the list, and there may be some delay if he/she is on their rounds.

Friday 3 July 1992

Ms Denise Schumann:

A Tale of Two Cultures ... The State Bank Oral History Collection

Denise Schumann is a freelance oral historian, researcher and director of her own company, Johden Pty Ltd. She has to her credit a number of important and exciting projects.

In 1987 she worked with Historical Consultants Pty Ltd recording the oral testimonies of former and current employees for Dairyvale's corporate history. She was also responsible for designing, developing and implementing the first phase of the Adelaide Gaol Oral History Project.

More recently, Denise was commissioned to conduct and oral history of the Waite Agricultural Research Institute. The results of this project are already attracting national attention because of the significance of the historical material being uncovered.

However, perhaps the most fascinating project that Denise has been associated with is the recording of the State Bank of South Australia's oral history in 1990. This was the first oral history of a bank in Australia.

Given recent events surrounding the financial and political demise of the State Bank and the Royal Commission into its affairs, Denise's account of the history of the former SBSA and the old State Bank are a timely reminder of the need for corporate institutions to understand and embrace their past before they map out the future.

Denise will explain how the corporate identity of the State Bank in the 1990's was a far cry from the nineteenth century institutions which gave rise to it. She will compare and contrast the social mores and cultural values that lay at the heart of banking practices over the last seventy years.

In this account she will examine how the 1984 merger of the former State Bank and the Savings Bank of South Australia fundamentally altered the cultural and economic concerns of the bank and set in on an entrepreneurial path which has, in no small way, contributed to its present difficulties.

SOCIETY NEWS

There is a continuing demand for back issues of the Society's journal. If members have copies of No's 1,4,9 and 10 which they would like to dispose of please contact the secretary.

An index for the Journal is under consideration by the Council.

Advertising is now available in the Journal. Rates on request.

Should any members have articles or documents they feel would be of interest to other members could they please send them to the newsletters editor at the HSSA Institute Building 122 Kintore Ave. All documents will be returned.

Now Available

William Shakespeare's Adelaide presents a refreshing and lively collection of essays on the life of the City of Adelaide from the 1860s to the 1920s. It is not a book about the Bard; Adelaide's William Shakespeare was a long-serving City Council officer.

There are chapters on the 'West End', St Mary's School, the parklands, the fish market, the Botanic Garden, churches, pubs, household furniture, slaughter houses, pharmacists, and the 'Lord' mayoralty.

There are discussions of decency, temperance, sly grog, prostitution, educational theory, municipal monopoly and declining church attendance.

This collection is written by members of the Association of Professional Historians.

Published by the Association of Professional Historians Inc.

Institute Building,

122 Kintore Avenue,

Adelaide, SA 5000

Telephone/facsimile (08) 270 1770

William Shakespeare's Adelaide can be ordered direct from the Association of Professional Historians at \$20.00 per copy plus surface postage and handling per copy within Australia \$5.00, overseas \$10.00

NEWS

An interesting article on nineteenth century Adelaide appeared in the September issue of the Australian Economic History Review Lionel Frost *Nineteenth Century Adelaide in a Global Context* pp.28-44. Frost is a lecturer in Economic History at LaTrobe University.

DOCUMENTS

Department of Mines and Energy South Australia

Rept Bk No. 91/58
DME No 293/81
G02311

Masonry Conservation Advice 1981-1991 by David Young

Abstract

Intended as a record of previous work, as much as an advisory document, this is a selection of twenty-two brief reports on masonry conservation undertaken in the period 1981-1991.

The reports cover analysis of materials, their sources, condition, and recommendations for their conservation and maintenance. The buildings investigated range from crude pastoral outstations to grand houses, from bridges to banks, and from churches to mine buildings. Most are of some heritage value.

The Introduction and two of the reports are reproduced below.

Introduction

In 1974 the Department of Mines commissioned the Australian Mineral Development Laboratories (now Amdel) to undertake laboratory tests on the physical properties of South Australian building stones. By providing designers with basic information on stone properties the further use of local materials would be promoted. Included in the test program were samples of stones which although no longer quarried, had been widely used in the past, many in notable buildings.

During the mid to late nineteen-seventies the Department began receiving requests for information on the types of stone used in Adelaide buildings, on sources of stone suitable for replacement of damaged or decayed materials, and on appropriate cleaning and conservation measures.

Major conservation projects requiring detailed investigation and laboratory analysis were referred to Amdel. Some investigations were carried out jointly with Amdel. Smaller projects were undertaken by the author, often at the request of the State Heritage Branch of the Department of Environment and Planning, or the National Trust of South Australia.

This is a selection of twenty-two brief reports on masonry conservation produced in the period 1981-1991. The reports are arranged in chronological

order. Other than minor editing to ensure consistency of terminology, the individual reports are unaltered. Thus they may not necessarily reflect current opinions. This is important—see the revisions to the report on Karatta House, Robe for an example of changes to original recommendations particularly in the case of mortar mixes. Hence, this volume is intended as a record of previous work as much as an advisory document.

McKinlay Memorial Murray Street, Gawler April 1988

Materials

Built in 1874-75, the McKinlay memorial is of considerable interest on account of the variety of types and sources of stone used in its construction.

The main structure: the four columns, the entablature, cornice and stepped pyramid above a quartz sandstone of unknown but most likely local source. This stone has been used in other buildings in Gawler such as the Anglican Church of St George, Cowan Street, and the old Post Office and old Telegraph Station both in Murray Street. This 'Gawler Sandstone' is remarkably durable even in extreme conditions, such as at St George's church where there are no gutters and no apparent damp-proof courses, the stone is in excellent condition.

The carved stonework of the arches is an oolitic limestone imported from Bath, England, at a time when readily worked stone suitable for detailed carving had not yet been discovered in South Australia.

The dark stone with the inscription on the east face is basalt, most probably from Melbourne where it is known as bluestone. This is different from the local use of the term bluestone where it refers to sedimentary or metamorphic rocks such as siltstones.

The polished grey granite obelisk and unpolished block immediately beneath (also of the same granite) are of unknown origin but were possibly imported.

The memorial is built with the eastern columns forming part of a retaining wall behind which is a former cemetery, now planted with lawn, shrubs and trees. The wall is constructed of local 'Gawler Bluestone', except between the columns of the memorial where squared blocks of the Gawler Sandstone are used.

Condition

The memorial is in generally good condition though some stone types have performed better than others.

The durable sandstone is, as expected, in excellent condition though disfigured by dirt and lichens. The structure has been hit by a truck in recent times, the impact being principally taken by the capital of the southwestern

column, though abrasion marks are visible on several stones of the column. The capital shows impact scars, but the principal damage is the dislodging of the stone and its movement by 50-100mm.

Some joints are open and mortar has been lost in places. Open joints are probably due to a combination of structural settling, structural damage due to impact and a lack of maintenance of mortar work.

Water percolating through open joints in the pyramidal structure has resulted in salt attack to the large slate ceiling slab and the underside is scaling badly.

The Bath limestone archwork on the northern side shows considerably pitting of the stone surface suggesting salt attack due to excessive water penetration. Also, movement of the structure has caused spalling (by uneven loading) of the upper surfaces of the limestone. Though fractured, the pieces remain essentially in place.

The basalt is dirty, but otherwise it and the granite work are in good condition.

The retaining wall is severely affected by salt attack as the result of watering of the gardens behind. Repointing of the Gawler Bluestone work 10-15 years ago, was carried out with an inappropriately-hard cement-based mortar. As a result, the bluestone adjacent to the joints has eroded away and the hard cement pointing is now up to 10-15mm proud of the stone. Even the relatively durable Gawler Sandstone is showing some decay adjacent to mortar joints in the wall within the memorial.

Treatment

The memorial should be cleaned, as the build-up of dirt and lichens will retain water and contribute undesirable soluble salts to the stonework.

Cleaning of the sandstone, basalt and granite elements should be by spraying with a fine water mist so as to keep the dirt wet while at the same time using minimum water. Then after an hour or so the dirt should be brushed off with a nylon bristle brush (similar to a dishwashing brush) followed by a light wash down.

A preliminary dry brushing may be desirable in areas of thick loose dust and lichens.

Care should be taken during the washing of the sandstone, basalt and granite elements to minimise run down and splash of dirt and water onto the limestone of the arches. Certainly no dishwasher brushing should touch the limestone.

The limestone will need great care but should be cleaned using the same method except that only paintbrushes should be used to remove dirt. Trial brushing with a toothbrush indicated a risk of damaging the limestone with anything stiffer than a paintbrush.

Undercleaning is to be preferred to overcleaning which may well damage the surface of the stone. No chemicals or detergents of any kind should be used.

The displaced capital should be resealed in its correct position after carefully trimming away old mortar to allow the stone to be moved.

Joints of the memorial should be repointed in a mortar of proportions 1:3:12, cement : hydrated lime : washed sand. Joints immediately above the spalled limestone should not be repointed in a mortar but with suitable mastic so as not to further stress the limestone.

Loose flakes should be gently brushed from the slate ceiling. Little can be done to improve it, but with repointing the joints of the memorial (and hence weatherproofing), the amount of water reaching the slate should be minimised.

Graffiti on the east face of the eastern wall should be treated with a paint stripper thickened into a gel so as to allow prolonged contact with minimal use of chemical. The treated surface should be thoroughly washed down after cleaning in order to remove as much chemical residue from the stone as possible. As with removing general dirt, undercleaning is preferable to overcleaning, the last 5% of paint will not be very obvious and its removal would require excessive use of chemical agents.

Long term conservation of the memorial and particularly of the adjacent retaining wall (which forms part of the memorial's historic setting) is threatened by the severe salt attack. Action is required to reduce the rate of decay of the bluestone and sandstone elements by restricting water transpiration through the wall and by repointing all joints in a deliberately weak sacrificial mortar.

Water transpiration can be minimised by trenching behind the whole length and depth of the wall and insertion of a barrier and geotextile drain system such as Nylex 'Core Drain'. This should be backfilled with coarse sand or fine gravel and will of course require some outlet drainage at the ends of the wall. Watering of the garden behind, should not occur within 2 metres of the wall and the intervening space should be planted with drought resistant ground cover and shrubs.

The hard cement mortar should be carefully removed from the whole wall and joints raked out to 30 mm to ensure a good key. Repointing should be carried out with a mortar mix of 1:4:15, cement : hydrated lime : washed sand. This deliberately weak mix will decay and require replacement but it will protect the surrounding stone from further damage. For the repointing of the bluestone work, charcoal cinders (from steam locomotives) should be added to the mortar to darken its tone to something like that of bluestone. This practice was common with Gawler bluestone work in the nineteenth

century and is currently being employed in the conservation of the Angle Vale bridge abutments.

Because of the risk of further vehicular damage due to the siting of the memorial, it is recommended that some form of traffic barrier or diversion be installed. This should not be so intrusive as to detract from the memorial's fine appearance.

Conservation work undertaken on the memorial should be thoroughly documented so as to enable future generations to evaluate the condition of the structure and the efficacy of treatments.

A maintenance program should be implemented; it should involve at least an annual inspection looking particularly at integrity of joints and degree of soiling.



German wedding in South Australia at the turn of the century. The traditional all black wedding dress is showing signs of British influence by the white trimmings.



BY THE KING.

A PROCLAMATION

Declaring that the Name of Windsor is to be borne by His Royal House and Family and relinquishing the use of all German Titles and Dignities.

GEORGE R.I.

WHEREAS WE, having taken into consideration the Name and Title of Our Royal House and Family, have determined that henceforth Our House and Family shall be styled and known as the House and Family of Windsor:

AND WHEREAS We have further determined for Ourselves and for and on behalf of Our descendants and all other the descendants of Our Grandmother Queen Victoria of blessed and glorious memory to relinquish and discontinue the use of all German Titles and Dignities:

AND WHEREAS We have declared these Our determinations in Our Privy Council:

NOW, THEREFORE, We, out of Our Royal Will and Authority, do hereby declare and announce that as from the date of this Our Royal Proclamation Our House and Family shall be styled and known as the House and Family of Windsor, and that all the descendants in the male line of Our said Grandmother Queen Victoria who are subjects of these Realms, other than female descendants who may marry or may have married, shall bear the said Name of Windsor:

And do hereby further declare and announce that We for Ourselves and for and on behalf of Our descendants and all other the descendants of Our said Grandmother Queen Victoria who are subjects of these Realms, relinquish and enjoin the discontinuance of the use of the Degrees, Styles, Dignities, Titles and Honours of Dukes and Duchesses of Saxony and Princes and Princesses of Saxe-Coburg and Gotha, and all other German Degrees, Styles, Dignities, Titles, Honours and Appellations to Us or to them heretofore belonging or appertaining.

Given at Our Court at Buckingham Palace, this Seventeenth day of July, in the year of our Lord One thousand nine hundred and seventeen, and in the Eighth year of Our Reign.

GOD SAVE THE KING.

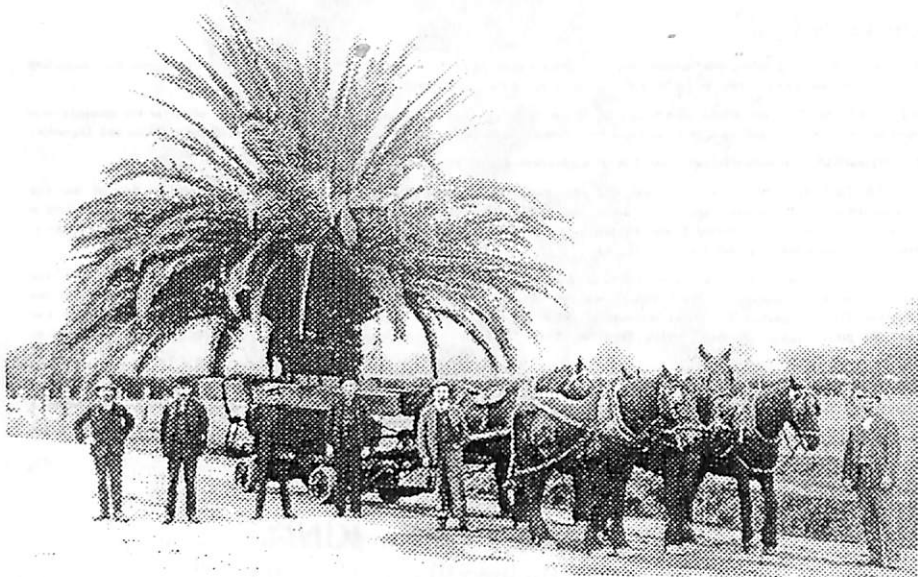
ARTICLES

THE LEGACY OF OWEN SMYTH'S DATE PALMS

by Patricia Sumerling

One of the city's most whimsical legacies of the past are the date palms to be found on North Terrace and around the Parade Ground. They first caught my eye only a few days after arrival as an immigrant to Adelaide in the mid 1970s, as they appeared to be in an eastern setting with what then looked to me like the Moorish architecture of the Museum buildings, and the Egyptian relic, all in harmony with each other. It is a first impression I will never forget.

The palm trees were planted by Charles Edward Owen Smyth soon after he designed and was responsible for the construction of the red brick wing of the museum in 1894. Owen Smyth decided to use the 3000 year old Egyptian obelisk as a centrepiece to emphasis the museum's role, and he stated that he planted palms to 'make the old Egyptian ghosts who may haunt the column feel more at home, and incidentally to add to the beauty of the little green spot, so restful to the eyes on a blazing hot Australian summer day'. Building the north wing and landscaping the grounds around it, also gave him the opportunity in 1892 to relocate the unsightly drill shed



*C.E. Owen Smyth 2nd from right with one of the palms.
Searcey Collection c1890s Mitchell Library, NSW*

and parade ground of 1868, then on North Terrace, to the old quarry, which appeared to be the ideal spot at the time.

Although the date palms may not be everyone's idea of what is suitable for the streetscapes of the city, Owen Smyth, with the meagre funds available to him in that period, believed in giving what he thought the people of Adelaide ought to have and not what they wanted. He did not believe in wasting anything, but used what materials he had to hand for the beautification of the city - and palms, as it happened, were close to hand and cost practically nothing.

When he was first appointed to his position it was one year before the Adelaide Exhibition of 1887, and he had the task of improving the North Terrace Boulevard rather hastily. With the knowledge that old Dr Mayo had numerous mature date palms in his garden on West Terrace, Owen Smyth was able to procure most of them for his scheme. The palms, over forty years old, each needed twenty two men to excavate them from holes twelve feet square and six feet deep. Weighing between four and five tons each, they were lifted onto waiting horse drawn carts by pulleys and tackles. The first palms were planted opposite the Adelaide Club.

The reason for continuing to choose palms for beautification lay in the rubbish that was tipped daily into the present day Parade Ground. The Parade Ground was originally one of several government quarries along the River Torrens from which limestone was quarried for public buildings. It was no longer used from about the late 1840s until Owen Smyth was appointed permanent head of the Works and Buildings Department (today known as SACON) in 1886. From the day of his appointment in June 1886, he kept his eye on how best to beautify the city.

His first task was to 'improve the general appearance of the blot on the landscape by filling up the old quarry' and then forming grassy slopes and terraces. This was not done in a day but over several years into the early 1890s with the City Council mucking in by dumping the street sweepings into it. City contractors were also encouraged to dump their filling there also. It did not go past Owen Smyth's astute observation that the numerous date stones thrown into the gutters by customers outside the Theatre Royal in Hindley Street, and then dumped into the old quarry, eventually germinated into a thick crop of baby date palms.

When big enough, the baby plants were transplanted into two rows of palms running east and west, which according to Owen Smyth did not thrive so well on the solid limestone as others that were planted north and south. These ones planted north and south, he planted himself one very hot November day. The ones he planted were about six or seven years old and stunted, when bought as a job lot from the Sewell's Nursery on Payneham

Road (still a thriving business). When planted out in 'rich loam with plenty of water, they went ahead like wild fire...'

Owen Smyth considered the old parade ground, which was in the vicinity of where the new wing was going to be constructed, an eyesore. When the opportunity arose to have it relocated the present location was then seen as the ideal spot.

The palms are about 100 years old now. As far as I am aware no efforts have been made to plant seedlings to take the place of the older ones as they die or fall over - and some are leaning at a precarious angle. While much emphasis is given to the greening of Adelaide with the right type of species chosen for particular spots and streets, I have never come across any mention of the future of the date palms. They should be given the utmost consideration for their continuing survival, with a guarantee that palm trees, which for so long have played an important role in the beautification of the city, will continue to do so.

References Newspaper Cuttings from the *Register* relating to South Australia by C.E. Owen Smyth, held at the Mortlock Library of South Australia. (Old reference number SAA 1011). This one 15 October 1923. Thanks to Brian Samuels for directing me to this source.

ACQUISITIONS OF INTEREST

MORTLOCK LIBRARY

BIG TREES IN WATER: KALANGADOO, THE TOWN AND THE PEOPLE 1850-1990.

Big trees in water: Kalangadoo, the town and the people 1850-1990. Comp. by Reg Chuck. Kalangadoo: Martion Hawke, 1991. 237 p. ill. 21cm. a size book.

ADELAIDE ZOO.

BAKER, Robert. Adelaide Zoo. Text by Robert Baker and Ilona Sisoletsky. 2nd ed. Adel.:Royal Zoological Soc. of S.A., 1990. 40p. col. ill. 30cm.. b size pam.

ANNE GLIDDON'S "FAMILY RECORD" (FROM LEIGH HUNT'S MUSICAL EVENINGS, LONDON 1815, TO JOHN MORPHETT'S CONCERT AT CUMMINS, SOUTH AUSTRALIA, 1851).

Borrow, K.T. Anne Gliddon's "family record" (from Leigh Hunt's musical evenings, London, 1815, to John Morphett's concert at Cummins, South Australia, 1851). Adel.: Pioneer's Assoc. of S.A., 1991. 43p. ill. 22cm. (No. 113) ISBN. a size pam.

ARTEFACTS FROM SHIPWRECKS IN SOUTH-EAST, 1851 - 1951.

Kenderdine, Sarah. Artefacts from ship-wrecks in the South-east, 1851-1951. Adel.: State Heritage Br., Dept of Environment and Planning, 1991. 68p. ill. 30cm. . b size pam.

BUSH TRACKS AND RADIO WAVES: A HISTORY OF PORT AUGUSTA SCHOOL OF THE AIR, 1958-1990.

Motley, Carrie. Bush tracks and radio waves: a history of Port Augusta School of the Air, 1958-1990. [By] Carrie Motley and Bill Starr. Croydon: Tread Softly Pub., 1990. 107p. ill. 22x30cm. . b size book.

BIOGRAPHICAL INDEX OF SOUTH AUSTRALIANS 1836-1885.

Biographical index of South Australians 1836-1885. Unley: S. Austn Genealogy and Heraldry Soc., [1991?]. 16 microfiche.

CARRICK HILL: THE ARTFUL GARDEN; SELF GUIDED WALKS WHICH INTRODUCE CARRICK HILL'S HERITAGE GARDEN AND SCULPTURE PARK.

Carrick Hill: the artful garden; self guided walks which introduce Carrick Hill's heritage garden and sculpture park. Springfield: Carrick Hill, [1991?]. unpagged, ill. 30cm. b sized pam.

HINDMARSH CEMETERY BURIAL REGISTER 1846-1987.

Hindmarsh cemetery burial register 1846-1987. Unley: S. Austn Genealogy and Heraldry Soc., [1991?]. 5 microfiche.

HINDMARSH CEMETERY INSCRIPTIONS.

Acquisitions cemetery inscriptions. Unley: S. Austn Genealogy and Heraldry Soc., [1991?]. 3 microfiche.

KADINA CEMETERY INSCRIPTIONS

Kadina cemetery inscriptions. Unley: S. Austn Genealogy and Heraldry Soc., [1991?]. 2 microfiche

KAURNA' WARRA: A SELECTED WORDLIST FROM THE LANGUAGE OF THE KAURNA PEOPLE OF THE ADELAIDE PLAINS.

FITZPATRICK, Phil. Kaurna' Warra: a selected wordlist from the language of the Kaurna people of the Adelaide plains. [Adel.]: Aboriginal Heritage Br., Dept of Environment and Planning, 1991. 39p. 30cm. b size pam.

MARRIAGES S.A. 1842-1867.

Marriages S.A. 1842-1867. Unley: S. Austn Genealogy and Heraldry Soc., [1991?]. 15 microfiche.

MITCHAM (SA) CEMETRY INSCRIPTIONS

Mitcham (SA) cemetery inscriptions. Unley: S. Austn Genealogy and Heraldry Soc., [1991?]. 4 microfiche.

MOONTA (SA) CEMETRY INSCRIPTIONS.

Moonta (SA) cemetery inscriptions. Unley: S. Austn Genealogy and Heraldry Soc., [1991?]. 4 microfiche.

NOARLUNGA: A SENSE OF PLACE

Noarlunga: a sense of place. [Aldinga: Noarlunga Council?], 1991. 55p. ill. 21cm. a size pam.

PAYNEHAM CEMETRY INSCRIPTIONS (SA)

Payneham cemetery inscriptions (SA). Unley: S. Austn Genealogy and Heraldry Soc., [1991?]. 6 microfiche.

THE ROSTREVOR STORY: A HISTORY OF ROSTREVOR COLLEGE, A CHRISTIAN BROTHERS' COLLEGE, WOODFORDE, SOUTH AUSTRALIA 1923-1983.

BOURKE, John V. The Rostrevor story: a history of Rostrevor College, a Christian Brothers' College, Woodforde, South Australia 1923- 1983. [Woodforde: the Author?], 1991. 278p. ill. 25cm. . a size book.

RUDALL: THE FOUR INDIVIDUALS I KNEW; A TRIBUTE TO A SOUTH AUSTRALIAN FAMILY.

WELLS, Peter B. Rudall:the four individuals I knew; a tribute to a South Australian family. St. Peters: St. Peters College Foundation Inc., 1991. 128p. ill. 22cm. a size book.

S.A. MARRIAGES 1879-1886.

S.A. Marriages 1879- 1886. Unley: S. Austn Genealogy and Heraldry Soc., [1991?] 10 microfiche.

SHIPS' DESERTERS [1891-1952]

Ships' deserters [1891-1952]. Unley: S. Austn Genealogy and Heraldry Soc., [1991?]. 11 microfiche.

SKETCH OF THE ABORIGINES OF SOUTH AUSTRALIA: REFERENCES IN THE CAWTHORNE PAPERS.

FOSTER, Robert, ed. Sketch of the Aborigines of South Australia: references in the Cawthorne papers. Ed. by Robert Foster. [Adel.]: Aboriginal Heritage Br., Dept. of Environment and Planning, m1991. 117p. col. ill. 30cm. b size book.

SOME INFORMATION ON SOUTH AUSTRALIAN GERMAN HISTORY.

HARMSTORF, Ian. Some information on South Australian German history. [Adel.]: S. Austn College of Advanced Educ., 1985. 76p. 30cm. b size pam.

SOME MORE INFORMATION ON SOUTH AUSTRALIAN GERMAN HISTORY.

HARMSTORF, Ian. Some more information on South Australian German history.[Adel.]: S. Austn College of Advanced Educ., 1988. 94p. 30cm. b size pam.

SOUTH AUSTRALIAN DESERTERS REGISTER [1852-1890]

South Australian deserters register [1852-1890]. Unley: S. Austn Genealogy and Heraldry Soc., [1991?]. 8 microfiche.

THE TANUNDA CLUB 1891- 1991: A CENTENARY HISTORY.

LINN, Rod. The Tanunda club 1891-1991: a centenary history. Blackwood FWD: Historical Consultants for the Tanunda Club, 1991. 48p. ill. 21cm. a size pam.

TO FIND THE WAY: HISTORY OF THE WESTERN FLEURIEU PENINSULA.

WILLIAMS, R. F. To find the way: history of the western Fleurieu Peninsula. Third ed. Yankalilla: The Yankalilla and District Historical Soc., 1991. 396p. ill. 25cm. a size book.

WALLAROO (SA) CEMETRY INSCRIPTIONS

Wallaroo(SA) cemetery inscriptions. Unley: S. Austn Genealogy and Heraldry Soc., [1991?]. 1 microfiche.

WEST TCE. CEM. B/R 1921-1940.

West Tce cem., b/r 1921-1940. Unley: S. Austn Genealogy and Heraldry Soc., [1991?]. 18 microfiche.

WEST TCE. CEMETRY [SIC] B/R 1901-1920.

West Tce. cemetery [sic] b/r 1901-1920. Unley: S. Austn Genealogy and Heraldry Soc., [1991?]. 6 microfiche.

WEST TERRACE CEMETERY BURIAL REGISTER 1840-1900.

West Terrace cemetery burial register 1840-1900. Unley: S. Austn Genealogy and Heraldry Soc., [1991?] 6 microfiche.

WEST TERRACE M.I. [MONUMENT INSCRIPTIONS?]

West Terrace m.i. [monument inscriptions?]. Unley: S. Austn Genealogy and Heraldry Soc., [1991?] 25 microfiche.

CONTRACT PRICES FOR THE BULK SHIPPING OF PASSENGERS IN SAILING VESSELS, 1816-1914: AN OVERVIEW.

McDONALD, John. Contract prices for the bulk shipping of passengers in sailing vessels, 1816-1914: an overview. By John McDonald and Ralph Shlomwitz. Bedford Pk: Discipline of Economic History, Flinders Univ. of S.A., 1991. 40p. tables, 30cm. (Working papers in economic history, no.49) b size pam.

CRADLE OF ADVERSITY: A HISTORY OF THE WILLUNGA DISTRICT.

LINN, Rob. Cradle of adversity: a history of the Willunga District. Blackwood FWD: Historical Consultants for the District Council of Willunga, 1991. 194p. ill. 26cm.. b size book.

THE DIARY OF WILLIAM LIGHT IN SWITZERLAND 1826

LIGHT, William. The diary of William Light in Switzerland 1826. Lyndoch: The Pump Press, 1991. 10p.ill. 23cm. a size pam.

THE GROSSERS FROM GRUENBURG 1841-1991: THE STORY OF ALBERT AND ROSINA GROSSER AND THEIR DECENDANTS IN AUSTRALIA.

The Grossers from Gruenburg 1841-1991: the story of Albert and Rosina Grosser and their decendants in Australia. [Cheltenham?]: Grosser Family Reunion C'ttee, [1991]. 216p. ill. 25cm. . a size book.

RATSCH FAMILY HISTORY IN SOUTH AUSTRALIA 1896-1991.

Ratsch family history in South Australia 1869-1991. Comp. by Coral Ratsch and Viola Ratsch. [Lobethal?]: Ratsch Family C'ttee, 1991. 78p. ill. 29cm. b size pam.

STRANG FAMILY HISTORY.

Strang family history. Comp. by milton James Gooley [and] Albert Douglas Hannaford. [Belair: M.J. Gooley and A.D. Hannaford?], 1991. 19p. 29cm. b size pam.

TEROWIE WORKSHOP: EXPLORING THE HISTORY OF SOUTH AUSTRALIAN COUNTRY TOWNS.

Terowie workshop: exploring the history of South Australian country towns, Comp. and ed. by A.F. Denholm, Susan Marsden and Kerrie Round. Adel.: Dept. of History, Univ. of Adel., 1991. 206p. ill. 21cm. a size book.

BISHOP, DR. GEOFFREY CHARLES PRG 943

Further papers of Dr. Geoffrey Charles Bishop, comprising a journal kept by members of the Bishop family relating to the operation of "Eldervale" market garden, Norton Summit. 1905-1926. 3 cm. Manuscript.

THORPE, C.W. D7114(T)

A history of "Richmond Park" Homestead at Marlestone, S.A., by C.W. Thorpe. 1976. 0.5cm. Typescript.

UMPHERSON, James and Margaret PRG 944

Papers of James and Margaret Umpherston "The Caves" near Mount Gambier, comprising two volumes of visitors' books, a letter to John Umpherston from Dr John Harris Browne, a silver case nameplate and thirteen photographs. 1882-1908. 8cm. Manuscript, photographs, silver metal.

**COMMUNITY HISTORY IN THE LATE TWENTIETH CENTURY
25-26 JULY 1992**

The 2nd State History Conference. Organised by the Community History Unit, History Trust of SA and the Northern Cultural Trust.

Venue: Port Pirie Festival Centre.

Approximate cost \$25.00.

Register your interest on 207 7550 to be sent a booking form.

Please note that some speakers (indicated thus #) have yet to be confirmed.

SATURDAY 25 JULY

9.30 am John Brackenridge: Welcome to Port Pirie

9.35 Peter Cahalan: Welcome from History Trust

9.45 Anne Dunn: Opening Speech

10.00 - 10.30 Keynote speaker: Professor Eric Richards (Flinders University)
"Family and local history in context"

10.30 - 11.00 Morning Tea

11.00 - 12.30 SESSION ONE: DOING COMMUNITY HISTORY TODAY

Chair: Geoff Speirs, Community History Unit
Nancy Wood (Port Pirie National Trust)
Roy MacDonald (Yorke Peninsula Family History Group)
Bill Hart (Pichi Richi Railway Preservation Society)
Maureen Wright (Burra National Trust)
Summing up: Eric Richards

12.30 - 2.00 Lunch

2.00 - 3.15 SESSION TWO: THE OPEN AIR MUSEUM

Chair: Susan Marsden, Community History Unit
John Reid (Broken Hill as an open air museum) #
Peter Bell (State heritage legislation: the new Act explained)
Lyn Leader-Elliott (Cultural tourism)

3.15 - 3.45 Afternoon Tea

3.45 - 5.00 SESSION THREE: BURNING ISSUES AND BRIGHT IDEAS (DISCUSSION GROUPS)

Chair: Peter Cahalan, History Trust
Conference participants will divide into small groups (8-10) to discuss for 10-15 minutes current issues: problems, needs, useful ideas and exchanges; each will choose a speaker who will make notes and then when the audience has re-combined, present their group's conclusions (each speaking no more than 3-5 minutes).

The notes will be collected by the Community History Unit and published in the next issue of *Community History*.
Summing up: John Ogle (Terowie Citizens Association and Northern Cultural Trust)

5.00 - 6.00 Port Pirie National Trust Museum will be open (\$2.00 /person)

6.30 Conference Dinner

Dinner speaker: Dr Peter Cahalan (Director, History Trust of South Australia) "Growing up in Port Pirie, or, the making of a South Australian historian".

SUNDAY 26 JULY

8.30 am Coffee

9.00 - 10.30 **SESSION FOUR: CELEBRATING OUR HERITAGE**

Chair: Brian Samuels, Community History Unit
Isabel Story and friends (Community arts, local libraries and history)
Ros Paterson (Celebrating Cornish heritage)
Mick Carricri (Italian heritage in Port Pirie) #

10.30 - 11.00 Morning Tea

11.00 -12.00 **SESSION FIVE: COMMUNITY HISTORY IN THE LATE TWENTIETH CENTURY**

Susan Marsden (History overview since World War II)
Brian Samuels (Community historians as activists)
Geoff Speirs (Collecting contemporary history)

12.00 - 12.30 Plenary discussion

12.30 - 1.45 Lunch

1.45 - 2.45 **SESSION SIX: WORKSHOPS**

(or to 4.45)*

Greg Drew (Signposting heritage)
Beth Robertson (Oral history)
Keith Fernandez (Conservation of historical objects)
? (Organising local history collections)

* Note: participants in the oral history and conservation workshops may register for one or three hours

END

Option: Tour of Port Pirie and smelters.

Note: This conference meets the conditions of the training guarantee.

DISCOVER YOUR OWN STATE

Insights into South Australian History

Sport, the Great Depression, working women, pastoralists, religion, Irish and German immigrants, aborigines, urban growth, local politics, the labour movement and reappraisals of some notable South Australians are the topics covered in this collection of articles reprinted from the Journal of the Historical Society of South Australia.

108 pages, A4 format. \$14.00 (postage included).

Produced and distributed by the Historical Society of South Australia Inc,
Institute Building, corner of North Tce & Kintore Ave, Adelaide 5000.
(Postal orders only). Copies can also be purchased at the
History Trust offices in the same building.

Sport 'n History

a gentle jog through the history of sport

Free Seminar

9.30am to 4.45 pm Saturday May 23 1992

Venue: The Armoury

(behind the north wing of the SA Museum)



"Sports History in Australia - past, present and future"

Dr Wray Vamplew

" Bread and circuses in the pubs "

- sport and hotels in Adelaide

Ms Pat Sumerling

"Tiresome relics of the past"

- the difficulties in finding sources for sports history

Dr John Daly

" A sports museum for South Australia? "

panel discussion

and a guided tour of the Migration Museum's stunning new exhibition

Fair Game

The Cultural Connections of Sport in South Australia

Sport 'n History is presented by the Migration Museum and
the Historical Society of South Australia

BYO lunch

donation for tea and coffee

For further information ring Mr Brian Samuels
Community History Unit,

History Trust of SA (08) 207 7556



COMMUNITY HISTORY UNIT

PUBLICATIONS AVAILABLE AS AT MARCH 1992

Reports and booklets

- B. Crozier *Owning the Past. Historical Societies in South Australia* (1990) \$4.50 + \$1.00 postage
- A. F. Denholm, S. Marsden, & K. Round (eds) *Terowie Workshop: Exploring the history of South Australian country towns* (1991) \$12.50 + \$2.50 postage
- S. Marsden & R. Nicol (eds) *The Politics of Heritage* (1990) \$7.50 + \$1.00 postage
- G. Speirs *Collecting South Australia's History. A review of current policies on movable cultural heritage* (1990) \$4.50 + \$1.00 postage
- G. Speirs et al *Museums in South Australia. Directory* (1991) \$8.50 + \$2.80 postage
- B. Samuels *What's in Your Museum* (3rd edition 1992) \$5.00 + \$1.50 postage
- B. Samuels *South Australian Historical Organisations 1990-91* (1990) (list) \$1.00 + 70c postage
- B. Samuels *South Australian History. A Select Chronology* (1987) \$1.00 + 70c postage

Magazine

Community History Quarterly. \$18.00 annual subscription (postage included).

Community History Calendar

Free; quarterly. Incorporated in *Community History* and distributed to the media.

Information Leaflets (Gratis - enclose stamped addressed envelope)

- No. 1 *How to do History* (2nd edition 1992) [S. Marsden]
- No. 2 *Advice for Historical Societies* (3rd edition 1992) [S. Marsden]
- No. 3 *Australia's Folklife Heritage* (1990) [B. Samuels]
- No. 4 *South Australian Firsts 1836-1986* (2nd edition 1991) [B. Samuels]
- No. 5 *South Australian Memorials 1802-1935* (1992) [B. Samuels]
- No. 6 *Museums in and around Adelaide* (1992)
- Research Your Family History! A Guide for Beginners* (1988) [B. Samuels]

Teachers Pack

Includes the leaflets, brochures on the Trust's museums, information on the Unit, flyers for some of the other publications. Send \$2.00 in stamps.

Other

Museum record sheets. 3c each + postage

Publications for resale

- E. Willis & S. Bernington (eds) *Handbook for Small Museums* (Western Australian Museum 1985) \$10.00 + \$2.80 postage

WRITE TO: Community History Unit, History Trust of South Australia, Institute Building, 122 Kintore Ave, Adelaide 5000. Tel: 207 7550. FAX: 207 7557.