

HSSA *History*

Newsletter of the Historical Society of South Australia

ISSN 1444-8459

No. 169, November 2003

Josiah Thomas's Woodyard, Mile End, S.A., c. 1938

by Gerald Fischer

I think it was late summer when
the stack began to rise, but then,
alas, old men forget, I know,
and this was sixty years ago.
Those were the far-off days before
environmentalists galore
would have us worry over-much
for burning mallee stumps and such.
The days when farmers 'made a quid',
and at the same time helped to rid
their land of stumps that sold by weight
when sent by rail to Mile End Freight
where Adelaide woodyards bought and sold,
though none whose stacks loomed quite so bold
as those Josiah Thomas reared.
Admiring school-boys wildly cheered
the paternoster's dizzy flight ---
a pure Heath Robinson delight
of wobbly wheels and posts and wire

so stumps in buckets might aspire
where men and lads bestrode the stack
and scarcely without looking back
would toss each stump exactly right
that at a distance to the sight
the stretched-out stack by artless art
seemed straight and smooth in every part ---
an Everest of mallee stumps
that peaked each June then quickly slumps,
declines and falls as winter cold
must be bought off with fiery gold.
October sees the woodyard bare,
the paternoster stopped mid-air,
a few ants left in wild unrest,
forced migrants from their mallee nest.

★★★★★

Note: 'Paternoster' --- an endless moving belt from
which hang spaced-out buckets.

A note from the Editor


This will be my last Newsletter. I have decided to retire as editor of *History SA* and as an HSSA Council member. I would like to thank most sincerely all those people who have contributed articles, information and illustrations for the Newsletter over the past five years. I would also like to say how much I have appreciated the support of HSSA members for the kind of Newsletter that I have aimed at.

Following my decision, a Council sub-committee has formulated a number of changes for *History SA*, so you will see a rather different publication in January. The new editor will be Alison Houghton (formerly Brain) and I wish her every success in her post.

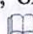
My very best regards to all readers, and my good wishes for Christmas and the New Year.

--- John Healey

Third printing for *S.A.'s Greats*

The second printing of *S.A.'s Greats: the men and women of the North Terrace plaques* has almost sold out. We have now sold 6,000 copies (mainly through the untiring efforts of HSSA member Russell Smith), and the book continues to sell at an average rate of over 100 per month. Council has now decided to proceed with a third printing of 3,000 copies. 

History SA deadline

The deadline for all material for the January 2004 issue of the Newsletter is Friday, 28th November, 2003. It should be addressed to Alison Houghton, Editor, *History SA*, 72 Austral Tce., Morphettville 5043, or e-mailed to historyspage@ozemail.com.au. 

The Historical Society of South Australia Inc.

Founded 1974

P.O. Box 519, Kent Town, S.A. 5071.

E-mail: hssa25@hotmail.com Web-site: www.hssa.org.au

Meetings are held on the first Friday of each month at 8 p.m. in the Prince Philip Theatre, Prince Alfred College, Kent Town. All welcome.

THE OBJECTS OF THE SOCIETY ARE:

- To arouse interest in and promote the study and discussion of history, especially South Australian and Australian history.
- To promote the collection, preservation and classification of source material of all kinds relating to South Australian and Australian history.
- To publish historical material.
- To promote the interchange of information among members of the Society by readings, lectures, discussions, field trips & exhibitions.
- To co-operate with similar societies throughout Australia.
- To do all such things as are conducive or incidental to the attainment of any of the above objects.

History SA is published with the assistance of a grant from the Federal Department for the Environment and Heritage. Articles may be reproduced without permission provided they remain unaltered and *History SA* is acknowledged.

COUNCIL:

President: Mr. D. Cornish

Vice-President: Dr. G. Bishop

Secretary: Mrs. G. Brown, Ph. 8278 5370

Treasurer: Mrs. A. Huckel, Ph. 8277 2953

Members: Ms. J. Callen, Mr. C. Deed, Mr. A. Fulwood, Dr. C. Garnaut, Mr. J. Healey, Ms. A. Houghton, Mr. T. Saunderson

Journal Editor: Dr. J.T. Stock, Ph. 8303 5755,

E-mail: jenny.stock@adelaide.edu.au

History SA Editor: Mr. J. Healey, 27 Germein St., Semaphore 5019. Ph. 8449 2268

APPOINTED OFFICERS:

Consultants: Mr. R.M. Gibbs, Dr. R.P.J. Nicol, Mr. B. Samuels

Records Officer: Mrs. E. Ulbrich

Auditor: Mr. P. Tsimopoulos, C.P.A.

Mortlock Archives

by Neil Thomas

Papers processed recently include a very interesting collection of personal letters received by Essington Lewis, Managing Director of Broken Hill Proprietary Limited and Director-General of Munitions in World War II, over the period 1905-1961. As one of Australia's leading and most influential figures of his era, he was known to many people across a broad cross-section of the community, from prime ministers, governors-general, industry leaders and B.H.P. employees. A special list has details of the 41 correspondents. (Essington Lewis papers are also held by the University of Melbourne Archives.)


A new group for John Napier Birks contains letters and diaries from J.F. (Frank) Birks to his father from Paraguay in the 1890s, his 1893 certificate of membership of the New Australia Co-operative Settlement Association, and a letter from a family member in France in 1918, written on a piece of the fabric covering a wing of Manfred von Richthofen's plane, shot down 100 yards from the writer's dugout.

Small groups of papers include those for Q. Stow Smith, Adelaide businessman and Baptist layman, E.W. Tuit and his family, Robert O'Callaghan, relating to his interest in the wine industry, and Audrey Symons, who worked at the Hendon Ammunition Factory during

World War II. Her papers cover the period 1928-1954 and provide an insight into her work, life and interests. The Arthur Hardy group has been arranged and described online, including photographs dating back to c. 1860.

Society record groups with additions include the Aborigines' Friends' Association, from 1943 to its winding-up in 2000, with papers relating to Meningie and Point McLeay projects; the S.A. Community Recreation Association and its constituent organizations, 1889-2000; and the S.A. Council for Children's Films and Television, formed in 1973 to examine the quality of visual material available for young people. Some of the papers date from the early 1950s, with the latest from 1995. The Glen Osmond Baptist Church records are a new group covering all the usual committees and organizations of the church, with minutes, roll books, financial records, and a video of the church's centenary service in 1983.

An important collection of interviews has additional material for the Royal Adelaide Hospital Oral History Programme. The interviewer in most cases is Dr. Joan Durdin, and the people speaking come from a variety of positions and time periods in the hospital's history. Transcripts are available for many of the interviews.

Business records of Lyndon Whaite Graphic Design document the creation of South Australia's 1986 sesqui-centenary logo and award-winning Australian postage stamps. 

Murdered words: some recent linguistic history

by John Healey

The English language, as I have said on a previous occasion in this Newsletter, is a dynamic, changing, living thing. But it is difficult for a language to be living when it is constantly being murdered. There is a difference between gradual, evolutionary change that derives from the practice of the population in general, and rapid, unjustifiable change that springs from ignorance and error on the part of a few. There are several words in English that are now often used erroneously and are even becoming common in literature printed by reputable publishers.

The following examples illustrate how words can acquire incorrect meanings through simple misunderstandings. Such mistakes become entrenched in common usage by being perpetuated in books, newspapers and television programmes. Editors, media presenters and producers have a responsibility, especially to the young, to ensure that their own ignorance does not result in the propagation of errors. Perhaps owning a dictionary should be a prerequisite for such jobs.

"Prevaricate", for example, is now being used, particularly by careless novelists, as a synonym for "procrastinate", for no other reasons, it seems, than that they both start with "p", both end in "-ate", and have the same number of syllables. "Procrastinate", as everyone knows, means "to delay or defer until another day" (from the Latin *cras*, meaning "tomorrow"). "Prevaricate", on the other hand, means "to act or speak evasively", "to deviate from straightforwardness".

It is interesting to note that the word derives, appropriately, from the Latin *praevaricator*, meaning a dishonest lawyer, which in turn came from the verb *praevaricari*, meaning to walk knock-kneed or crookedly. The confusion between "prevaricate" and "procrastinate" may have been compounded in modern society by the fact that politicians, government departments and bureaucracies habitually do both.

"Conniving" is a word that many people take to mean "scheming in an underhand manner". It means nothing of the sort. The misunderstanding has perhaps come about because the word sounds somewhat like "contriving" and "conspiring". However, "conniving" means "turning a blind eye". One connives at something immoral or criminal if one deliberately ignores it. The word comes from the Latin *connivere*, "to wink at". It is used, in its correct sense, in the scientific name of an Australian lizard, *Lerista connivens*, which has a nictitating eyelid — an extra membrane which enables

the creature to wink in order to protect the eye from dust. A truly conniving little reptile!

Commentators in the media sometimes refer to a political figure's "cohorts", implying that they are followers or henchmen. Again, incorrect. A cohort is not one person. It is a band or company of fighters. (In Roman times, it was a tenth part of a legion and comprised between 300 and 600 men.) The error may have arisen from a confusion with other words such as "consort" and "colleague". Readers may remember from their school-days the opening lines of Byron's poem "The Destruction of Sennacherib", where the word was used correctly.

*The Assyrian came down like a wolf on the fold,
And his cohorts were gleaming in purple and gold.*

"Forensic" is probably the most commonly misused of the words discussed here. It has appeared in innumerable B-grade movies and television police dramas and is assumed to mean "scientific" or "medical" --- usually in reference to the investigation of crucial clues to a crime. How many times have we heard a fictional police detective say, "Take it up to forensic." ?

The word, however, is an abbreviation of "forensic science" or "forensic medicine". "Forensic" itself means "relating to a court of law". So forensic science is science used in the investigation of crimes or in the subsequent trials. Unfortunately, we are now hearing newsreaders (even on the A.B.C.) who are reporting on a court case, talking about "forensic evidence", as if evidence in such a case could ever be anything but forensic.

It must be said that this is not the first time that an adjective has taken on the sense of a noun with which it is often associated. "Toxic" is a case in point. In classical Greek, *toxicos* meant "relating to the bow or archery". It was a practice of Scythian archers to smear a mixture of dung, snake venom and human blood on the tips of their arrows, and the poison so used was referred to by the Greeks as *toxikon pharmakon*, "the archery drug". By the time the adjective *toxicos* entered the Latin language (as *toxicus*), the meaning of the noun *pharmakon* --- drug or poison --- had attached itself to the adjective *toxicus*, which thus came to mean not "of the bow" but "poisonous".

This should not be used as an excuse, however, for the misuse of the word "forensic" over two thousand years later.

A dying culture destroys everything
it touches.

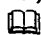
Language is one of the first things
to go.

--- Jerry Rubin: *Do It!*

Index of special articles in the *South Australian Year Book, 1966-1999*

The *South Australian Year Book* was first issued by the Commonwealth Bureau of Census and Statistics in 1966 and, other than in 1985 and 1998, appeared annually until its demise in 1999. What came to be called "Special Articles" were mentioned in the preface of each volume from 1967, with a consolidated list appearing from 1970 onwards. The following index of special articles that appeared in the *Year Book* from 1966 to 1999 is reprinted from the 1999 edition. It has not been checked against the preceding lists for errors or omissions.

--- Brian Samuels

- Aboriginal Culture 1978, pp. 27-38
 Aboriginal Lands in South Australia 1997, pp. 85-96
 Aboriginal Relics 1969, pp. 201-8
 Adelaide Festival Centre 1975, pp. 245-9
 Adoptions 1968, pp. 221-4
 Aerodromes, Early and Recent Developments 1966, pp. 277-8
 Archaeology 1977, pp. 40-54
 Birds of South Australia 1972, pp. 28-40
 Cameos: Adelaide Botanic Garden 1996, p. 93
 Adelaide Festival 1997, pp. 155-6
 Adelaide Symphony Orchestra 1997, pp. 157-8
 Aquaculture 1997, pp. 256-60
 Carrick Hill 1996, p. 95
 Cricket Academy 1996, p. 97
 Football Park 1995, p. 141
 The Bay Tram 1995, p. 298
 Conserving the State's Cultural Materials 1983, pp. 32-55
 Consumer Protection 1973, pp. 167-71
 Currency 1968, pp. 552-6
 Defence Research Centre 1969, pp. 184-92
 Droughts 1967, pp. 7-10
 Earthquakes 1970, pp. 18-19
 Eclipses 1977, pp. 5-11
 Education, Historical Summary 1969, pp. 153-4
 Education and Information Services of the South Australian Museum 1984, pp. 34-43
 Electricity, Early Development 1966, pp. 278-80
 Environmental Management 1995, pp. 13-38
 Filling in the Maps 1995, Supp.
 First Flight from England to Australia 1969, pp. 334-5
 Flinders University of South Australia 1967, pp. 163-8
 Football Park 1995, p. 141
 Forestry, Historical Development 1970, pp. 432-4
 Fossils of the Flinders and Mount Lofty Ranges 1974, pp. 31-4
 Freshwater Fish of South Australia 1971, pp. 27-34
 Geology of South Australia 1970, pp. 3-20
 Government, Early Constitutional History 1971, pp. 60-2
 Harbours, Historical Development 1966, pp. 270-4
 Health Services Usage 1974, pp. 278-81
 History of Early Settlement 1970, pp. 116-17, 339
 Insects of S.A. Homes and Gardens 1976, pp. 32-42
 Integrated Economic Censuses 1971, pp. 446-57
 Mammals of South Australia 1970, pp. 42-9
 Manufacturing Establishments, Classification of 1975, pp. 492-6
 Marine Mammals 1981, pp. 31-9
 Metric Conversion 1973, pp. 612-18
 Milk Price Equalization Scheme 1977, pp. 498-500
 Minerals of South Australia 1975, pp. 21-39
 Motor Vehicles, Census of 1975, pp. 559-61
 Motor Vehicle Usage 1975, pp. 561-2
 Oenography 1994, Supp.
 Overland Telegraph Line 1972, pp. 526-31
 Passenger Motor Vehicle Industry 1977, pp. 537-43
 Population Censuses 1968, pp. 77-86; 1977, pp. 181-95
 Rainfall Probability 1966, pp. 6-9
 Railways, Historical Survey 1966, pp. 263-6
 Regional Studies: Adelaide 1985, pp. 553-80
 Barossa 1997, pp. 333-44
 Eyre 1982, pp. 583-614
 Fleurieu 1996, pp. 321-38
 Kangaroo Island 1994, pp. 313-34
 Lower North 1981, pp. 587-614
 Murray Lands 1992, pp. 275-88
 Northern 1983, pp. 601-44
 Outer Adelaide 1984, pp. 561-93
 South-East 1991, pp. 281-97
 Whyalla 1995, pp. 332-51
 Yorke Peninsula 1993, pp. 265-81
 Reptiles of South Australia 1973, pp. 32-42
 Retail Price Indexes 1970, pp. 494-7
 Roads, Future Development 1970, pp. 319-25
 Rundle Mall 1977, pp. 114-18
 Snakes in South Australia 1985, pp. 32-9
 Soils of South Australia 1969, pp. 21-31
 South Australian Museum and its Collections 1982, pp. 31-41
 South Australians 1836-1986 1986, pp. 1-88
 Spiders and other Arachnids of South Australia 1979, pp. 29-43
 State Emblems 1970, pp. 94-5
 Statistical Divisions and Subdivisions 1977, pp. 135-43
 Sunrise and Sunset 1973, pp. 3-5
 Time 1973, pp. 1-2
 Tramway and Omnibus Services, Historical Survey 1970, pp. 512-13
 University of Adelaide 1874-1974 1974, pp. 198-212
 Vegetation 1967, pp. 26-37
 Vertebrate Fossils of South Australia 1980, pp. 31-41
 Wage Fixation 1967, pp. 253-8
 Wage Rates, Male & Female Relativities 1970, pp. 290-2
 Water and Water Pollution Control Laboratories 1975, pp. 314-16
 Wine Industry of South Australia 1968, pp. 376-95; 1979, pp. 421-39; 1994, pp. 297-312 

It's all in the genes

What do you do when your genealogical research hits a brick wall? How can you tell whether a person with your surname is related to you? Can you narrow down the options when faced with a number of possible places of origin for your ancestors? The answers to such problems can often be found by looking within you --- at the ancestral record preserved in your genes. While there is no substitute for reliable documentary evidence, commercial DNA analysis has proved to be a valuable tool in the construction of a family tree. It cannot give you names and dates but it can save you a lot of time by confirming genetic links, eliminating false trails and providing clues as to where to concentrate your research.

Two tests are available to anyone with £150 to spare. One is based on the Y chromosome, which traces male lineage, and the other on mitochondrial DNA, which follows the female line. Y chromosomes are passed down the male line almost completely unchanged, a man's Y chromosome being 99.9% the same as his father's. There are mutations but the average rate is only one change in 500 generations. This means that men with a male ancestor in common will have nearly identical Y chromosomes. It also means that the mutation rate can be used to determine when two men last shared a common male ancestor.

Mitochondrial DNA passes virtually unchanged down the female line, so a comparison of two people's genetic "fingerprints" can reveal whether they share a common female ancestor, and the mutation rate can show when their last common female ancestor lived.

Oxford Ancestors is a company that provides DNA analysis specifically designed for genealogical purposes. Its work is based on research done by Bryan Sykes, Professor of Human Genetics at Oxford University, and his team at the Institute of Molecular Medicine. On request they will forward to you a sampling kit, containing a small brush which you rub on the inside of each cheek and return in the sterile envelope provided.

A male client is then sent a 10-marker genetic fingerprint of his Y chromosome, which, in conjunction with the results from other potentially related males, can help to solve certain puzzles in family trees. For example, a number of British men with the surname Pomeroy all thought that they were descended from an eleventh-century Norman aristocrat, Ralph de la Pommerai, who arrived in England with William the Conqueror. However, DNA analysis of 51 Pomeroy men revealed that there were at least seven separate lineages. A comparison of these with authentic documentary evidence proved that only six of the 51 were actually related to the Norman family. But it also showed genetic relationships between males who were not previously linked by documentary records.

DNA analysis can also prove that families with different forms of an older surname are related. The

Ridgwicks and the Reddihoughs, both of Yorkshire, were found to share a common male ancestor, who dated from a time when the family name was Ridehalgh.

The testing of mitochondrial DNA is less immediately useful for genealogical purposes (because there is no link between maternal lineage and surnames) but it has led to one rather astonishing revelation. From the rate of mutation of mitochondrial DNA, Professor Sykes has shown that the maternal ancestry of almost all modern Europeans (and those whose maternal roots are in Europe) can be traced to just seven women who lived in different parts of the Continent between 45,000 and 10,000 years ago --- the time of the last Ice Age.

They have been given the invented names of Helena (who lived in the south-west of present-day France), Velda (north-eastern Spain), Tara (Tuscany), Katrine (Austria), Ursula (Greece), Jasmine (Syria) and Xenia (southern Russia). Helena, for example, lived 20,000 years ago and founded a maternal clan whose descendants account for 47% of modern Europeans. Oxford Ancestors can determine which of these women you are descended from and send you a map of ancient Europe showing where they all lived. In other parts of the world 29 such clans have been identified so far.

Mitochondrial DNA testing hit the headlines in 1991 when the possible remains of the Russian royal family, the Romanovs (executed by the Bolsheviks in 1918), were unearthed at Yekaterinburg. A DNA sample taken from one of the bodies showed that it was almost certainly that of the Tsarina Alexandra. How did they know? Alexandra's maternal grandmother was Queen Victoria, who was also a direct maternal ancestor of the Duke of Edinburgh. He volunteered a sample of his own DNA and the two matched perfectly.

DNA analysis has also been used in New Zealand to provide convincing evidence of the origins of the Maori people. Mitochondrial DNA testing shows that Maoris share a gene for alcohol tolerance with the Taiwanese, so the female ancestors of the Maoris are likely to have come from Taiwan. Surprisingly, however, analysis of male Y chromosome patterns show that the Maoris' male ancestors came from Papua-New Guinea. The suggestion is that the seven boats that Maori legend says brought them to New Zealand left Taiwan about 6,000 years ago with a predominance of women on board and on their way south collected a number of men from Papua-New Guinea to act as navigators.

--- John Healey


References:

Mike Hamer: "Back to Your Roots", *New Scientist*, 16/3/02
"Catalyst", A.B.C. Television, 27/3/03

Details of the DNA tests can be found on two web-sites:

www.oxfordancestors.com (British)

www.familytreeDNA.com (American)

For an example of how Oxford Ancestors has helped the research of a South Australian family, see Jeff Burgher and Bill Burgar: "Genes and Genealogy", *South Australian Genealogist*, Vol. 29, No. 1, February 2002. 

New at the Mortlock

Selected by Brian Samuels from recent issues of *Mortlock Miscellany*, the listing of Mortlock Library accessions, which is available on the State Library's web-site www.slsa.sa.gov.au. The list does not include archival material, which is covered in the "Mortlock Archives" column on page 2.

Australia Day Anniversary, Adelaide, S.A., Friday, 28th July 1916: Official Souvenir Programme (J.L. Bonython & Co., Adelaide, 1916)

S.M. Bonnington: Beyond the Furthest Fences: For Christ and the Continent: The Inland Mission of the Presbyterian Church of Australia (P.C.E. Press, Fortitude Valley, 2001)

A.L. Fox: Hahndorf: A Journey through the Village and its History (Fox, Hahndorf, 2002)

The Friends Meeting House: Its Story and Message (Religious Soc. of Friends (Quakers), Nth. Adel., 1976)

A.W. Gordon (ed.): An Arcadian Souvenir (Victor Harbor Times, Victor Harbor, 1915)

The Governor's Role and South Australia's Government House (Government House, Adelaide, 2002)

A. Hausler (ed.): Twentieth-Century Lyndoch, Vol. 2: Know the Past to Shape the Future (Lyndoch & District Historical Society, Lyndoch, 2002)

H.M.A.S. Hobart: From Guns to Sea Dragons (Pages Publishing, Adelaide, 2002)

P. Humby: Currency Creek, South Australia 1837-2002 (Humby, Middleton, 2002)

K.S. Inglis: The Stuart Case New ed. (Black, Melbourne, 2002)

Kaurna Meyunna, Kaurna Yerta Tampendi (Recognising Kaurna People and Kaurna Land): Walking Trail Guide: Karrawirra Parri (River Torrens) and Adelaide City Area (Graham F. Smith Peace Trust, Adelaide, 2002)

H. Lindsay: The Washerwoman's Dream: The Extraordinary Life of Winifred Steger, 1882-1981 (Simon and Schuster, Roseville, 2002)

Map of Country between Adelaide and the Sea Coast for Military Purposes (Surveyor-General's Office, Adelaide, 1882)

L.W. McBean: Lachlan McBean, 1810-1894: Pastoral Pioneer: A Pastoral and River Boat History Rev. ed. (McBean, Lismore, 2002)

G. McCarthy: Things Fall Apart: A History of the State Bank of South Australia (Australian Scholarly Publishing, Melbourne, c. 2002)

D. & C. McKay: The Worst of Woomera 3rd ed. (Ross Parry, Sydney South, 2002)

L.C. McMaster: The Founding of a New Christian Denomination: The Bethesda Movement of South Australia (2002)

R.S. Munchenberg: Prosperity and Failure: A Brief History of the Settlement of the Areas North-East

and East of the Barossa and on the Murray Flats (Barossa Valley Archives and Historical Trust, Tanunda, 2002)

Naracoorte Caves National Park: Australian Fossil Mammal Site World Heritage Area (National Parks and Wildlife SA, Naracoorte, 2002)

J. Nicholson: Publicans' and Wine Licences: How to Oppose the Issue of New Licences in Accordance with the Latest Legislation (Carey and Page, Adelaide, 1878)

The Old Adelaide Gaol Garden: "Bread for the Body, Roses for the Heart" (Adelaide Day Centre for Homeless Persons, Adelaide, 2000?)

An Original Song, Sung by the Electors of Hindmarsh to W. Giles, Esq. (Goodhugh, Adelaide, 1857?)

M.F. Page: The SACOSS Story, 1947-1997 (South Australian Council of Social Service, Adelaide, 2002)

K. Pearce & S. McNicol: Narrow Gauge Memories: The Collection (Railmac Publications, Elizabeth, 2002)

R. Rees: Speech Delivered in House of Assembly, South Australia, November 12th, 1884, on the Second Reading of the Protection of Young Women Bill (Advertiser General Print Office, Adelaide, 1884?)

S.A.R. Islington Works, 1940 (South Australian Railways, Adelaide, 1940)

A. Smith: Outback Corridor: World War II Lines of Communication across Australia (Smith, Plympton, 2002)

South Australia, Federation and the 20th Century (Australian Broadcasting Corporation, Adelaide, 2001) [Videorecording]

A. Stubbs: Early Marriages (Hussey & Gillingham, Adelaide, 1913)

E. Taylor: The History and Development of St. Kilda, South Australia (St. Kilda Progress Association, St. Kilda, 2003)


R. Taylor: Unearthed: The Aboriginal Tasmanians of Kangaroo Island (Wakefield Press, Kent Town, 2002)

J. Telfer: With Greatest Expectation: The Colony, Crime and Corrections in South Australia 1999


This Valley of Eden: A History of Eden Valley (Eden Valley Historical Committee, Eden Valley, c. 2002)

H.M. Tolcher: Seed of the Coolibah: A History of the Yandruwandha and Yawarrawarrka People (Tolcher, Linden Park, 2003)

E.H. Woollacott: A State Lottery: Why Not? (United Churches Social Reform Board, Adelaide, 1948?)

M. Ziaei (ed.): Kith And Kin: Sources for Family History 2nd ed. (Libraries Board of South Australia, Adelaide, 2003) 

Ragless bequest

Council has decided that the bequest of \$200 to the HSSA from foundation member Gordon Ragless, who passed away in March 2002, will be put towards the cost of a digital camera, to be used to record Society functions. 

An Adelaide Christmas in 1880

by James Potter

The nineteenth century saw many changes to the nature of Christmas celebrations in Europe and America. Gift-giving to the poor evolved into the universal exchange of gifts; rowdy revelry in the streets refined itself into reflective family celebrations; the magic of Christmas became increasingly driven by the commercialization of the protracted shopping season. This article examines the extent to which the "ideal" Christmas of Dickensian nostalgia --- a joyous and contemplative family celebration, untouched by the prolonged retail spree of today --- was a reality in 1880 Adelaide.

The 1870s is generally seen as one of the more prosperous decades for South Australia and the following decade was a time of stability. It may therefore be presumed that many people in Adelaide had the ability to celebrate Christmas in 1880 as they saw fit.

There was no question of transposing all the characteristics of the European festive season to Adelaide.

The blazing yule-tide fire, with closed shutters and drawn curtains, the round games, the blind man's buff, and the forfeits, by which the long evening was merrily passed away in the other hemisphere, can here hardly be thought of without a sense of dread.

And life was changing in the Australia of 1880.

Means of communication and intercourse are so vastly improved that all social habits and customs are altered. Reunions between relatives and friends who are separated by distance can be effected with a tithe of the cost and trouble they formerly involved; they consequently occur with greater frequency, and Christmas days have lost some of their speciality in this respect.

Symbols of Christmas that we know today, such as Father Christmas and decorated trees, had made an appearance in Australia by 1880. Christmas trees had become popular mid-century in Europe when one was shown in a sketch of Queen Victoria and Prince

Albert celebrating "at home" in an 1848 issue of the *Illustrated London News*. They sold well in Adelaide's East End and Central Markets as Christmas approached, and on December 17th the Payneham Institute advertised a Christmas tree sale.

Father Christmas was becoming more prominent in the northern hemisphere by 1880. Drawn by the American Thomas Nast in *Harper's Illustrated Weekly* (between 1863 and 1900), he wore a red suit trimmed with white fur, sported an array of evergreens in his hair, and was usually seen smoking a pipe. This is not quite the 1930s Coca-Cola-inspired figure we know today. Father Christmas was also a welcome figure in Adelaide, but his character as described by the *Advertiser* seems different from that of today.

Father Christmas is kindly though hoary; he exerts his genial sway with unabated vigour; and rejoices in the possession of lusty life.

Newspapers reveal that Father Christmas played no part in the inducement to spend. In the first week of December, advertisements offering large assortments of imported toys, jewellery, novelty and fancy goods began appearing. W.C. Rigby, for example, had just unpacked a *large and magnificent variety unsurpassed by any arrivals for some years*. Flint's in Hindley Street emphasized the need for sufficient wineglasses, decanters, cutlery and crockery to celebrate the Christmas meal. *For happy Christmastide replenish at Flint's*. Although the emphasis was on Christmas Day, advertisements show that it was also fashionable to give New Year's gifts.

In early December John Hall advertised for 100 children and 50 young ladies required for a proposed Christmas pantomime. Hall, together with his Byronic Comedy Company, seemed to be the life and soul of the Theatre Royal at that time. He was

the director and major performer in most of the shows.

On December 17th a notice in the *Register* proclaimed that:

... the township of East Glenelg will be sold at the Pier Hotel Glenelg at 3 p.m. 18th Dec at a lower figure than any land in the vicinity has been sold before. A rare opportunity for investing and presenting your children with a tangible Christmas Box --- one that will be worth double its costs within a year.

Marchant and Son offered wickerwork prams for an ideal present --- *Ease and Health for Baby, Comfort for the Mother*. On the weekend before Christmas, ⇨



FOR HAPPY
CHRISTMASTIDE
REPLENISH
AT
FLINT'S,
37, HINDLEY-STREET.

Respectable Wine Glasses, 4s. per dozen
Cut-glass Tumblers, 4s. 6d. per dozen
Quart Cut-glass Decanters, 3s. 6d. each
Pressed Glass do., 1s. each
Covered Glass Butter Dishes, 1s.
Glass Jam Dishes, 6d. each
Plates, Meat Dishes, Howls, &c., &c.
Complete Toilet Sets, 11s. 6d.
White and Gold do., 15s. 6d.
Knives and Forks, Carvers, Steels (Ivory,
Bone, Buffalo, and Stag Handles)
Tea, Dessert, and Table Spoons
Britannia Metal Teapots
Electroplated Cruets
Trays and Waiters
Wire Dish-covers
Block Tin Dish-covers.

FOR EXTRA BEDS, CHAIRS, TABLES
AND FURNITURE OF ALL SORTS
TRY FLINT'S,
37, Hindley-street.

Note: All quotations (printed in italics) are from the *South Australian Register* and the *Advertiser*, December 1880, in particular the 24th and 27th.

holiday packages were offered --- ten days in Tasmania (Launceston) for £8 return; excursions (by sea) to Stansbury, Mount Gambier, or even Melbourne, for £3.

On Tuesday December 21st the first full dress rehearsal was held for the Theatre Royal pantomime, its full title now revealed as "Amphibio, The Rhine Queen; or Harlequin, Sir Rupert the Reckless, and the Knights, the Nymphs, the Naiads, and Tommy Tadpole and the Little Water Wagtail". It was to be *on a scale of magnificence never before attempted in Adelaide*. Much was made of Adelaide at last being blessed with a pantomime to see at Christmas time. It was usually seen in the winter months because of the *scarcity of burlesque talent when the demands of the neighbouring colonies had to be satisfied*. Not to be outdone, the proprietor of the Academy of Music (A. Lazar) announced his own pantomime based on popular nursery rhymes --- Jack and Jill, Little Bo Peep and Little Jack Horner, amongst others.

On Wednesday December 22nd the Mayor of Adelaide (E.T. Smith) announced that for the second year he had issued 400 five-shilling tickets for distribution amongst the poor. These tickets were guaranteed to be honoured by any shop in Adelaide during the Christmas period. His kindness was acknowledged on Christmas Eve when the Adelaide Quartette Society serenaded him with carols at his residence.

Christmas Eve 1880 was a mild day (maximum 86° F) and after a week of temperatures in the 90s it was an opportunity for the storekeepers to finalize the decorating of their businesses. An observer standing on the Beehive Corner would have seen an unusual abundance of greenery in all directions.

The street decorations were as profuse as we have ever known them before, branches of pines, of gums, and of other trees being used wherever possible, either on shop fronts or on verandah-posts. . . . Every shop front is either artistically adorned with lovely ferns, shaded with the somewhat sombre pines, or made gay with flowers and foliage. Even the tramcars, omnibuses, cabs, and actually an ice cart were decorated with green boughs, and the humble butcher's horse might be seen doing his morning round with his weary head crowned by palm leaves.

Historically, in the northern hemisphere evergreen clippings such as holly and mistletoe were brought inside a house to contrast with the brown and white

colours of winter. Perhaps an attempt was being made in Adelaide to forget the brown land and the white glare of a hot sun on the Australian landscape. But not by using holly and mistletoe!

To the eyes of a visitor from the old country the decorations of the streets would create great surprise. Scarcely any holly is used, and the mistletoe is rarely seen. Instead of these things, branches of eucalypti and other indigenous trees are used, and what the decorations lack in minuteness of detail and artistic finish they certainly make up in quantity. Cherries supply the place of hollyberries and the rose takes the place of the mistletoe --- for as the Rev. Charles Clark used to say, Australian young ladies do not object to being kissed "under the rose" instead of beneath the mistletoe. The decorations are by no means confined to the main streets. If every house does not show its sprig of holly, every horse carries its bit of foliage, and every vehicle, from the tram cars to the perambulator, is more or less adorned by leaves, or sprigs, or branches of trees.

Later in the day, as darkness approached, a profusion of Chinese lanterns would have become evident, and the Imperial Hotel on the corner of King William and Grenfell Streets would have attracted attention with gas illuminations. The highlight in King William Street, however, was a collection of businesses between Weymouth and Franklin Streets where Messrs. Kast (hairdresser), Robertson (bookseller) and Roberts & Wood (stationer and bookseller) went in for a profusion of loveliness almost startling in our prosaic street. The latter firm advertised a discount of two pence in the shilling on all cash purchases of 5 shillings and upwards during December.

This may be the last opportunity to receive this discount (given annually at this time) as the End of the World in 1881 has been foretold by Mother Shipton. (Mother Shipton was a sixteenth-century prophet.)

Nearby, the mail coach office of J. Hill and Co. was a hive of activity, both in the morning --- when there was a more than usually lively appearance in consequence of the large number of passengers for conveyance to the different parts of the hills. The ordinary coaches did not prove adequate to the occasion, and two extra coaches were put on to Crafers, one to Willunga, and one to Mount Pleasant, and about 160 people were carried from the metropolis --- and in the afternoon when a further 400 passengers were conveyed to

LOOK HERE!!!
Ease and Health for Baby.
Comfort for the Mother.
 THE MOST SUITABLE
CHRISTMAS BOX AND NEW
YEAR'S GIFT
IS A WICKERWORK



OBTAINABLE AT
MERCHANT & SON'S,
Basketmakers & Willowgrowers,
109, HINDLEY-ST., and at ECHUNGA.
Also PICNIC BASKETS for the HOLIDAYS.

various hills destinations. *When the coaches with their splendid teams arrived one by one, there was such a crowding and crushing as sent terror into the hearts of timid ones.* Opposite all this bustle, outside the Prince Alfred Hotel, stood a large, stately, decorated Christmas tree.

Down Hindley Street could be found the premises of J. Miller Anderson and Co. --- who could offer *English, German, French Fancy Goods, dressing bags and cases, bags, purses, wicker-work baskets, leather goods, napkin rings, crumb trays and brushes, cigar and cigarette cases, white wood articles, picnic baskets, real lace and India Muslim scarfs, ties, and bows.* Nearby, the Theatre Royal was staging the first night of the pantomime. It was poorly attended and perhaps just as well --- the *Register* review pronounced it very difficult to understand, with John Hall being the only effective actor. The *Advertiser*, although critical, was more generous and hopeful.

To the young colonial who has never witnessed the doings at Drury-lane or Covent Garden, the pantomime at the Theatre Royal will be a welcome means of obtaining an evening's enjoyment, and when the piece is in good working order, as it will be in a night or two, and the comicalities of the harlequinade are smartly rendered, there is no doubt that crowded houses will reward the lessee for his enterprise in producing this class of entertainment at Christmas.

The reviewer was particularly impressed with the transformation scene entitled "The Home of South Australia, or The Old and New in the Gilded Cornfield of Peace, Prosperity and Plenty".

The grand transformation scene is a triumph of mechanical and artistic skill, passing from a view of Adelaide to the dazzling changes of a monster chromatope, in which all the colours of the rainbow are utilised, and a rapidly revolving limelight gives added brilliancy to the beautiful picture.

Late in the day Rundle Street became the major centre of activity. All vehicular traffic (except for horse-

trams) was stopped between King William Street and Pulteney Street. Shops remained open until 9 p.m. (as they regularly did at this time of the year) while a good-natured crowd shopped and celebrated.

To say that the streets were uncomfortably thronged is perhaps putting it a little too mildly for locomotion had to be effected by very slow degrees. The greatest good humour, however, prevailed, and the evening passed off, we believe, without accident.

The *Advertiser* thought the premises of F. Armbruster and Uhlmann, tobacconists, displayed the most complete decorations, with a profusion of ferns, willows and mulberry leaves. Bookshops --- May and Co. near James Place, and G. & W. Birks further east --- *Christmas Cards and Christmas Card Albums. The best selection we have ever had to offer* --- were also very inviting. *At the booksellers the most attractive works are displayed --- from the railway novel to the abstruse volume likely to meet with the approval of some bluestocking.*

Variety stores were very popular --- Berens Brothers in Stephens Place, for example, offered a *Large Assortment of German and French toys; Jewellery, Perfumery, Christmas Cards, Concertinas and Accordions, Purses, Pocketbooks, Desks &c.* Near Stephens Place, J.R. Dobson & Co., photographers, welcomed passers-by into their Temple of Light for family group photos. *Portraits taken in about two seconds. Proofs shown next day.* Opposite, the Academy of Music was not having a successful opening night. The *Advertiser* thought their pantomime not sufficiently rehearsed.

Near Gawler Place, Eaton and Griffiths advertised *Dolls, Dolls, Dolls*, and further east the watchmaker W. Hathaway announced *Jewellery, Jewellery, Jewellery.* The other jewellers of

Rundle Street --- R. Menz and J.M. Wendt --- were highly decorated, the taller displaying *quite a bower.* The hotels too were popular. The King of Hanover near Charles Street had four large pine trees fixed to posts on the footpath, and the York Hotel on Pulteney Street was illuminated with gas. →

G. N. & W. H.

BIRKS

CHRISTMAS CARDS.

The best selection of the above we have ever had to offer are now open.

CHRISTMAS CARD ALBUMS

LADIES' FANS.

Black and White. Plain and Flowered.

PHOTOGRAPHIC ALBUMS.

A thorough good stock both in quality and quantity to choose from.

BASKETWARE.

The favourite Palm Leaf or Indian Grass Basket in all sizes. A large variety of other kinds.

NEW ANNUAL VOLUMES.

The Child's Own Magazine, 1s. and 2s.
The Cottage and Artisan, 1s. 6d.
The Boys' Own Annual, 7s. 6d.
The Girls' Own Annual, 6s.
Every Boy's Annual, 6s.
Every Girl's Annual, 6s.
Wedding Bells, vol. 20, 4s. 6d.
The Child's Companion, 1s. 6d., 2s., and 3s. 6d.
The Tract Magazine, 1s. 6d.
The Chatterbox, 3s.
Sunday, 3s. and 5s.
Little Wide Awake, 3s. and 5s.
Young England, 6s. 6d. (The new form of Kind Words.)

Others expected by every Orient Steamer.

BIRTHDAY TEXT BOOKS.

BIBLES.

NEW FANCY GOODS.

French Flowerpots and Stands.
China Candelsticks in a variety of patterns.
Wedgewood and Floral Flower Spills.
Afternoon Tea Sets and Toilet Sets.
Branch Flowerstands on Mirrored Plates.
Stag Head and other Brackets.
Bronze Ewers.

ALSO,
An Assortment of Electroplated Ware.

60, RUNDLE-STREET.

Much earlier in the day — at 3 a.m. in fact — the Advertiser had sent its reporter to the East End Market.

Long before reaching the market itself one encounters a long file of carts and other vehicles, the property of market gardeners and others who have not got regular stalls in the market itself. These are ranged along the sides of the street, and their contents exposed for sale as soon as unpacked. Christmas trees, evergreens, fruit of every description, and an innumerable army of poultry appear to be the stock-in-trade of these outside dealers, who by the way as they take up their respective positions along the street, indulge in any amount of harmless badinage, never, except in rare instances, overstepping the limits of chaff, and sinking into quarrelsome or indecorous behaviour.

At the first entrance to the market from Rundle-street we come across a stall whereat an itinerant ice merchant is, even at this early hour, attempting to dispose of some highly-coloured ice-creams, which, he assures us, "are prime". We take his word for it, and leave others to test their quality.

Next to the refrigerative man we come to a tastily arranged poultry stall, at the back of which a buxom dame with up-turned sleeves and winning smile is engaged in arranging the bodies of five or six defunct geese, who have evidently not long shuffled off their mortal coils, as traces of their life's-blood may be noticed yet fresh upon their yellow beaks; near by them is a cage containing a selection of about a dozen of their more fortunate brethren, who are quacking forth a most unmusical dirge, to the evident confusion and annoyance of a neighbouring basketful of ducks, the property of an adjoining stall-owner.

We learned that the market is divided into no fewer than 350 stalls, all of which are regularly rented, the rents aggregating close on £120 per week; besides all these, every one of which was occupied, there were nearly thirty casual stalls let. . . .

Passing on from the ice-man and poultry mistress we came upon several well-arranged and tastefully decorated vegetable and orchard stalls, where we notice some fine cauliflowers, marrows, potatoes, and peas, the latter being a fine sample. . . .

The next moment our attention was divided between some fine cherries spread out for sale and the fair

vendor, a very attractive damsel in a pink frock and auburn hair, who appears to us as an oasis in the desert of plain looks by which we are encircled. Who can resist ripe cherries when lips that put their colour into the shade tell one they are to be recommended "for they are fresh gathered and only 10d. a pound"? The double charm has done its work, and we find ourselves the purchasers of said fruit at about 4d. a pound above market price.

By 4 o'clock the market is beginning to get unpleasantly crowded. Hundreds of purchasers and as many more non-purchasers are struggling or elbowing their ways up to the several stalls, or promenading up and down the principal divisions of the market, some carrying armfuls of evergreens or Christmas trees, others lugging half-choked fowls about in baskets, and yet

others who have patronised a Cheap Jack, with lungs like a blacksmith's bellows, are amusing themselves with exercising "Jumping Moses", or pinching "Crying Kitty" (an abominable invention in the shape of a doll), to the infinite disgust of the general public, and to the serious annoyance of a small dog, whose frantic efforts to secure Moses ere he flies away on the indiarubber are sad to witness. . . .

By 5 o'clock the crowd was at its thickest, and quite one thousand people must have been congregated in the market

avenues. From 5 o'clock up to 7 there was a steady influx of visitors; but after that time the crowd became less packed, and those whose business or breakfast demands had to be satisfied squeezed themselves out of the building and went on their different ways; by 8 o'clock the bulk of the people had departed, some loaded with fruit, others almost smothered in Christmas trees, nearly all testifying to their patronage of the stalls by carrying away with them some one or more purchases of Christmas cheer. The poultry show was good, but we have seen much better displays of fruit; in fact, excepting a few trays of cherries this commodity was far below the average in quality, though in quantity it lacked nothing.

Christmas Day, the Register reminded its readers, . . . is always observed as a close holiday in Adelaide. No ordinary business is transacted, except, perhaps, by the owners of vehicles and the occupiers of public-houses. [But it] is by no means generally

TEMPLE OF LIGHT.
INSTANTANEOUS PHOTO. STUDIO,
44, RUNDLE-STREET.

WE HAVE NOW PERFECTED OUR
NEW INSTANTANEOUS PROCESS,
AND ARE SURPRISING OUR PATRONS WITH THE NOVELTY OF HAVING THEIR PORTRAITS TAKEN IN ABOUT

TWO SECONDS;
ALSO HAVING
Two Operating Galleries
AND
Two Artists,
THERE IS NO DELAY.

PROOFS SHOWN NEXT DAY.

Portraits Enlarged and Finished in Oils or Water-Colour from Carte-de-Visite or Life.

TEMPLE OF LIGHT,
44, RUNDLE-STREET, ADELAIDE.

observed as a day for religious worship. There are services at a few of the churches perhaps, and the South Australian Sunday-school Union assembles its children in the Town Hall for the usual Christmas morning service of song. But this begins at 9 o'clock, and is over in an hour, so that it shall not unduly interfere with the full enjoyment of a day of recreation.

The newspapers gave much more attention to outdoor pursuits.

Notwithstanding the intense heat [maximum 101° Fahrenheit], tens of thousands of people left the city either by the railways to the Bay and the Semaphore, or to some of the shady nooks and glens among our ever-new and ever-beautiful Mount Lofty Hills.

Both the suburban railway companies ran 25 trains to Glenelg on Christmas Day, the first leaving at 6 a.m. and the last returning at 11.45 p.m.

The beach was lively with groups of pleasure-seekers enjoying themselves to the top of their bent. The pleasure-boats tempted many out on the water, so that with comforts ashore and pleasures afloat there was no lack of means for recreation to the hundreds or thousands assembled at the seaside.

[At Port Adelaide] some of the vessels in harbour were decked with boughs and others displayed their bunting. Early in the day the steamers *Ceres* and *James Comrie* left the wharf, each freighted with a goodly number of excursionists. The *Ceres* was bound for Stansbury and the *James Comrie* for Edithburgh. [Both vessels were to return two days later.] The steamer *Glenelg* left with excursionists for Holdfast Bay and returned on the evening of the same day.

Although the newspapers gave scant attention to religious services it must be recorded that

... full choral services were held at St. Paul's Church, morning and evening, [and] Carl Maria von Weber's celebrated "Mass in G" was chanted . . . at

St. Francis Xavier's Cathedral [which] was literally packed, numbers of people being obliged to stand in all the aisles.

Monday and Tuesday, the 27th and 28th, were also public holidays. On the Monday the South Australian Jockey Club Christmas Meeting was held at Morphettville in milder weather and the Third Monster Christmas Celebration at the Exhibition Building attracted many

with its sporting programme. The pantomime had remedied its deficiencies and was proving to be popular. On Wednesday the *Advertiser* reported that it had *unmistakenly hit the public taste . . . the theatre on Tuesday was filled with a large and appreciative audience.*

It would seem that the degree of commercialization and attitude to the holiday season we know today were not all that different 120 years ago. One rather sad comment, however, reflects a different Adelaide. The *Register* reported that as a result of the evergreen street decorations:

The aspect of Rundle, Hindley and King William, and other principal streets in South Adelaide, and not forgetting O'Connell-street in North Adelaide, were wonderfully improved -- in fact, made to look so sylvan with foliage, that jaded citizens who long for "fresh fields and pastures new", must regret that the fine trees, ferns and palms could not root and flourish in the street forever. There is more

wealth of foliage in the city this Christmas Eve than on any former occasion except in the early days of the colony when gum trees grew in the heart of Adelaide, and Victoria-square was the bush.

Nearly fifty years of white settlement had left the city, parklands and riverside devoid of vegetation. Reforestation was one Christmas wish that the citizens of Adelaide could not be granted.

[Illustrations are taken from the *South Australian Register* and the *Advertiser*, 20th--27th December 1880.]

RETIRING FROM BUSINESS RETIRING FROM BUSINESS.

GENUINE CLEARING-OUT SALE

OF WATCHES AND JEWELLERY,

AMOUNTING TO

£70 000

(Seventy Thousand Pounds Sterling)

J. M. WENDT,

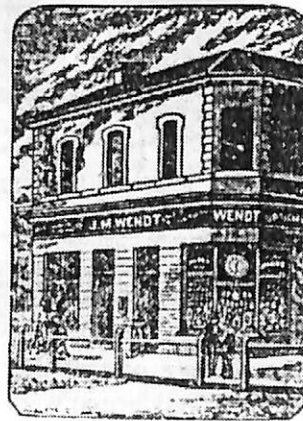
WATCHMAKER AND JEWELLER

ADELAIDE,

MOUNT GAMBIER,



70, Rundle-street.



Commercial-road.

J.M. Wendt's advertisement in the Advertiser, December 1880, announcing his retirement, was somewhat premature. He was unable to sell his business at this time and was still operating, in partnership with his son and stepson, twenty-five years later.

Separate spheres?

On the danger of taking the categories of home and work for granted

by Julie Collins

"Home" and "work" are words that we commonly use, and we often take for granted that they have a universally accepted meaning. But their meaning over time has changed and can be changed still as we socially shape the world we live in. "Home" and "work" can not only refer to social categories but also to the physical places which embody them. As such, the interdependence of social and spatial concepts are linked throughout history, with one unable to be divorced from the other. In this article I wish to follow the evolution of the places and terms "home" and "work" in Australian history and show how changeable and changing such concepts can be.

Prior to the Industrial Revolution home and work were closely linked, and work processes were closely interwoven within the culture of the community. There was no need to separate home from work because work culture was convivial and not something from which to escape. Production of goods by the family was primarily to satisfy the immediate needs

of the community. Often all members of the family --- men, women and children --- were part of this production process. Consumption and production were not segregated as both were essential to daily life and hence were not regarded as opposites as they are today. Over time, with the transition to industrial capitalism and the rise of the factory, families ceased to function as independent productive units and the home gradually changed from being seen as a place of production into being seen as a place of consumption. This division was reinforced by the development of the suburbs --- areas devoted to the reproduction of the labour force and representing a haven from the increasingly poor conditions of the workplace.

One viewpoint often cited is that work and home developed two contrasting cultures following the Industrial Revolution because they were carried out at two different times, in two different places. But this fails to take account of the initial reasons for which work and home were located in different places to begin with.

The temporal and spatial separation should not be seen as the single cause for the development of the contrasting cultures of home and work but rather an effect of emerging ideas about labour, the industrial process, home, and the roles of men and women. This physical and temporal separation then led to the reinforcement of the concepts of segregated home and work. Davidoff argues that, although industrialization and the separation of home from work occurred simultaneously, this was no simple cause and effect. Rather, the Industrial Revolution can be seen as a period of conflict during which the definitions of male and female and their physical locations either at work or at home were being formed. Johnson agrees, seeing the separation of home from work as an integral yet contested part of the development of patriarchal capitalism.

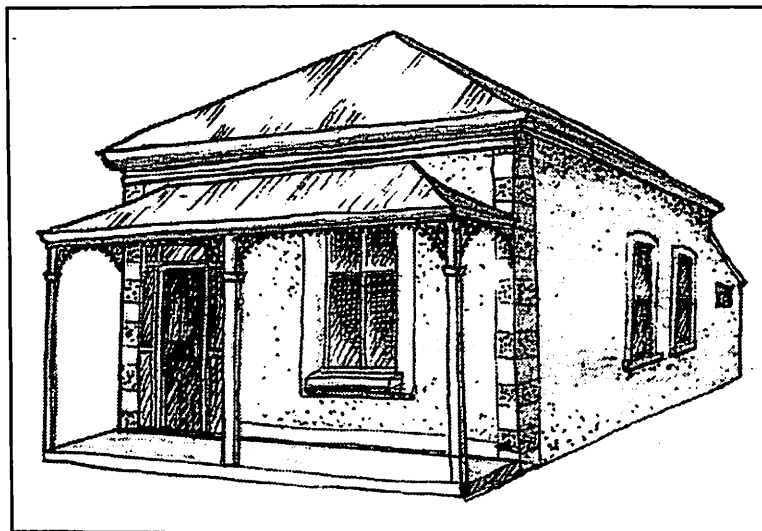
Australia, being colonized by Britain in the late eighteenth century, was influenced by developments occurring in Britain at that time. The settlements that occurred along the coastline developed into admin-

istrative centres and ports, and became cities through which the products of the rural hinterland could pass on their export journey to Europe.

As capital flowed from Britain, the growth that occurred throughout the nineteenth century in Australia was manifested in the transformation of the city centres from timber and thatch buildings to more massive and taller stone buildings. This created

a highly visible definition between work, placed in the city centre, and homes around the periphery. As Wright points out, "it was easier to celebrate the distinction between homes and tall buildings going up in downtown areas" when it was visibly obvious. As a consequence, it was the physical shape of the city that had an impact on the way home and work activities were thought about.

Towards the end of the nineteenth century industrialization began to reshape Australian cities. The introduction of public transport in the form of tram and railway networks led to the change from a "walking city" to a "public transport city". Suburban sectors developed, with working-class housing built close to factories and docks, while on the other side of town middle-class residential suburbs developed in more attractive surroundings free from industry and consequently away from the places of work. The inner city areas developed to become places of business, trade, manufacturing and housing for those working in the lower paid jobs



A pitched-roof cottage typically represents "home".

available in the city. For these workers the physical separation between home and work was not an available option.

Land in Australia, unlike that in Britain, was abundant and affordable. Hence the problems of overcrowding in cities were avoided to a large extent. Many workers could afford to buy their own land on which to build their own house and as the public transport era progressed settlement patterns were no longer governed by the need to be within walking distance of the work place. Consequently the suburban dream of a house on its own land away from the work place was achieved by many Australians.

Large scale industrial manufacturing and the factory system did not become a force in Australia until the beginning of the twentieth century, but when it did it reinforced the focus upon the cities within each State.

As this change in the nature of work occurred, the importance of the idea of the home grew. The increasing anonymity of the worker and the loss of individual identity that was occurring in the work process increased the need to find a way to express one's individuality. The private house and garden provided this.

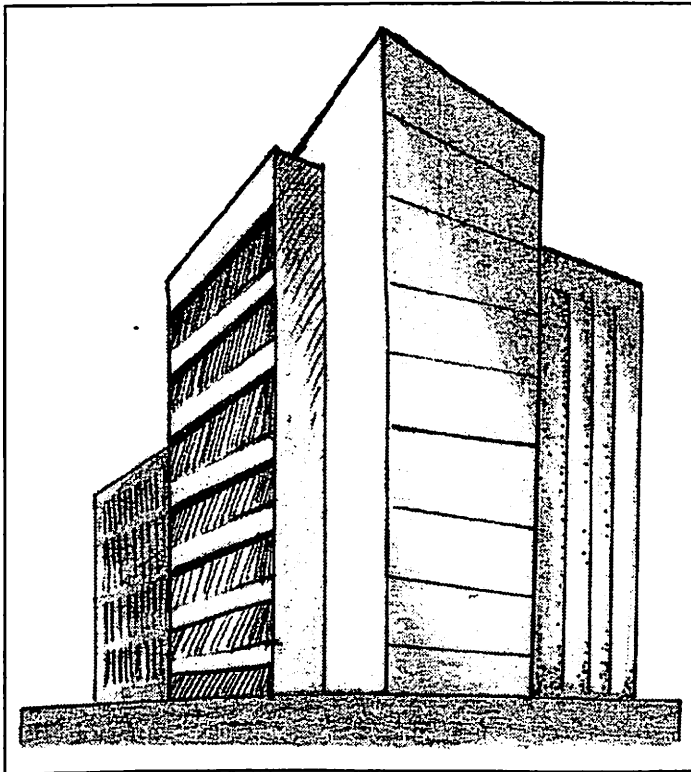
As this industrialization and movement to a manufacturing-based economy did not occur as rapidly or to the same degree in Australia as it had done in Britain, the split that occurred between home and work during this time was not so violent. As a consequence, home and work are regarded by many as being naturally evolved categories, which were never to be questioned.

The movement to an economy in which manufacturing and mass production were important components was seen to reflect the industrialization that had swept the western world. As Prost states, "One of the greatest changes to occur in the twentieth century affected work. In broad terms, production moved from the private sphere into the public." Prost sees this change as taking two forms, firstly in the differentiation and specialization of space, and secondly in the social norms that pertained to each sphere.

These spatial and social changes were inherently linked. As production moved into the public sphere, not only did the spaces which housed it change but so too did the perception of working people. Specialized

buildings that could accommodate large equipment and large numbers of labourers emerged. Together with these, the social attitudes towards workers changed. They were regarded as "labour", as a component of the production process, and the work they did was valued in monetary terms as output. Simultaneously, the personal value the workers placed on their job disintegrated as they became little more than cogs in the machine, losing control over the process of production of which they were part. Control over the production process was taken over by the managers, whose job it was to oversee the labour and keep "it" working to increase profit.

There was an increased importance placed on suburbs and housing, as the antithesis to work. Working became a means to an end, the end being the ability to afford housing and support one's family. It became



The multi-storey office building represents the idea of "work".

important to the Australian psyche to maintain high levels of home ownership and the quality of housing soon became a focus of reform groups. During the 1920s the planning and improvement of working class and slum areas signalled the beginning of government involvement in such issues, with the emergence of the Garden City movement heralding new, better planned suburbs for housing. These suburbs worked towards enshrining the belief that work and home should be maintained as separate entities, shaping the perception of an ideal life for much of the twentieth century.

Zoning was seen as a more scientific way of organizing cities, and the impact zoning had in spatially segregating cities into residential, industrial and commercial land uses reinforced the ideal of separate spheres for work and home and consequently for men and for women. This was coupled with the "ideal", as portrayed in the burgeoning media of women's magazines, which presented the house as a woman's rightful place.

Parrington notes how the scientific household management advocated for women had the effect of repositioning women as consumers within the home rather than as producers. However, in times of labour shortage, such as during the World Wars, this domestic ideology was suspended as women went out to work, although afterwards the changes were seen as being temporary and the separation between home and ⇒

for *South Australian History* has a chapter on "Place Names", which includes a list of superseded place and suburb names with their present equivalents.

Remember, however, that the Directories record occupiers, not owners as the Lands Titles do, and they are not completely reliable. Omissions occur, the reliability of the annual updating is not known, and neither is whether the information was all gathered in the year of publication. In addition, for the period prior to house numbering, you must work back from when numbers started and use adjoining houses and ratebooks to help track the house you are interested in. This requires special care, as sometimes houses temporarily disappear from the directories when they are unoccupied.

The Directories and Almanacs are held by the State Library and State Records, and those for 1839-1934 are available on microfiche. The State Library and State Records each have copies of M.P. Mayo's typescript "Index to Miscellaneous Information and Advertisements contained in South Australian Almanacs and Directories, 1839 to 1872", which helps you discover when the residents of a locality are listed separately from the alphabetical listing of the entire State. The Library has also published *Colonial Residents of South Australia 1839-1848*, a consolidated index to residents listed in the directories, available on microfiche.

Council Rates Assessment Books may provide descriptions of the house and, when compared over time, can indicate that a structure has been erected through an increase in the rateable value of formerly unoccupied land. If Rate Books have survived, they are usually held by either the relevant council or State Records. Peake's *Sources for South Australian History* lists those held by the latter.

Other sources

The State Library of South Australia holds local histories, photographs, family history material, architectural style manuals, heritage surveys, magazines, journals and newspapers which may all be useful to you.

Local Histories will give at least a general background of the history of the area in which your house is located and may occasionally have some information on the house itself.

Local History Collections may be held by historical societies or museums or in the local library or council office. Information may include land ownership and subdivision details, along with photographs and general historical information.

Council Records, notably Rates Assessment Books, often give descriptions and valuations of buildings. Councils may also have information regarding the date of construction and subsequent alterations and additions to a house, especially after 1923 when a new Building Act was proclaimed.

State Government archives are managed by State Records. If your house was once owned or managed

by a Government agency, they may hold some information in Government Record Groups and Series (GRG and GRS). State Records also holds records of many local councils.

Maps and aerial photographs are held by various agencies and may reveal the early settlement of your area, suggesting a construction date for your house. On some more detailed maps your house may actually appear as a dot. The old Fullers maps held at the Lands Titles Office give information relating to the subdivision of the metropolitan area. Official aerial photography generally dates only from the late 1940s.

Heritage Surveys will be useful for finding information about more notable houses and there are regional and/or local surveys for most of the settled areas of the State. A list is available on the Heritage SA web-site.

Further reading

- J. Elliott: *Our Home in Australia: a description of cottage life in 1860* (Flannel Flower Press, Sydney, 1984)
- A.G. Peake: *Sources for South Australian History*, 2nd edition (Tudor Australia Press, Adelaide, 1998)
- J.N. Persse & D.M. Rose: *House Styles in Adelaide: a pictorial history* (Real Estate Institute of South Australia, Adelaide, 1993)
- S. Pikusa: *The Adelaide House 1836 to 1901: the evolution of principal dwelling types* (Wakefield Press, Netley, 1986)

Heritage South Australia's Information Leaflet 1.10 *South Australian Architecture: A Reading List* contains a more extensive list than the above, and the State Library's South Australia Source Sheet on "Buildings" an even fuller one.

Other useful resources

Ian Evans' World of Old Houses web-site contains a wealth of material (www.oldhouses.com.au)

The South Australian Genealogy and Heraldry Society produces some very useful publications and has a wide range of resources in its library if you need to track a specific owner.

The State Library of South Australia catalogues and databases can be searched on-line.

The Historical Society of South Australia publishes a newsletter and a journal, and organizes meetings and field trips, which provide a good introduction to South Australian history.

Acknowledgement

This article is the text of Heritage Information Leaflet 1.11, published by the Heritage Branch of the Department for Environment and Heritage, available on the Heritage Branch web-site www.heritage.sa.gov.au (this version down-loaded in June 2003). A useful source of ideas for the leaflet was Don Watson's article "Dating Your House" in the *Journal of the National Trust of Queensland*, Vol. 3, No. 1, February 1978. 