

## HSSA visit the Adelaide Town Hall

Early in June a large group of our members met Glen Woodward in the foyer of the Adelaide Town Hall. We were about to embark on a stimulating two hour tour of the complex.

In 1863 the Corporation of Adelaide made the controversial decision to build a very large and expensive Town Hall. Architect Edmund Wright's plan had been selected in the competition which had been held and he was given the task of supervising the construction. Shortly after building began the public became convinced that the façade was far too plain, so Wright was asked to design a tower to ornament the hall. The Prince Albert Tower was constructed in front of the hall, over the footpath. The building was completed in 1866, but the spaces for three clocks remained empty until Sir J. Lavington Bonython donated the clocks in 1935.

Glen pointed out the cold marble of the staircase in the foyer, and we were invited to keep our eyes open for other marble features. The original wooden staircase was replaced by the present marble one. We next ascended to the balcony from which the Queen and the Beatles, have waved to the citizens below. We entered the auditorium, setting for countless balls, symphony concerts and organ recitals. It has hardly been altered and has a reputation for fine acoustics. The massive J. W. Walker organ was installed in 1990. It has 4,500 hand made pipes, 4 keyboards and 61 stops. The 26 Corinthian columns around the auditorium felt warm to the touch, and in spite of their marble appearance, are actually made of wood.

At the rear of the auditorium is the Banquet Room, added to the complex later in the nineteenth century. Double doors here prevent the audience hearing the orchestra tuning up before concerts. The room has recently been restored to its original décor. The walls are boldly adorned with the Coat of Arms of the Corporation and there are ornate plaster roses near the ceiling. The wooden panels lining the walls appear to be bevelled but actually are quite flat, the effect being achieved by the stain on the surface. This is a French method.



*HSSA stalwart Glen Woodward points out features of the Adelaide Town Hall to the mid week tour group.*

Returning to the ground floor we admired the art works along the corridor. The 1842 map of Adelaide by George Kingston shows that at that stage most of the buildings were clustered near Hindley St. and Light Square. The Queen Adelaide Room at the end of the corridor is a reception area and a museum honouring Queen Adelaide. Her husband William reigned for 7 years, and after his death Adelaide became very close to her niece, the young Queen Victoria.

We then visited the Colonel Light Room where the committees of Council meet in modern day comfort. There are samples of Light's water colours painted on his four year journey around the Mediterranean Sea. Finally we entered the Council Chamber, added to the Hall in 1882. Glen demonstrated the bar, used to prevent certain people from entering the chamber, and the stand for the silver mace, used on Council occasions. Behind the Lord Mayor's seat is a stained glass window commemorating the coronation of King Edward VII in 1902. On the east wall is a portrait of John McDouall Stuart whose expedition across Australia, from South to North and back, stretched from 1861-1863.

In the 1950s adjacent buildings were incorporated into the Town Hall complex. For example, the Prince Alfred Hotel on the south side ceased operations in 1953 and was incorporated into the building.

Glen Woodward's witty accounts of the lives of Queen Adelaide, William Light, and others were enjoyed by us all. The tour was a delight. Thankyou Glen.

**Denis Harper**

## From the President

Welcome to the August/September issue of *History SA*. This month I would like to start my column by thanking the large number of members who have taken the time to complete the member survey. Council is delighted by the feedback it has received, and looks forward to taking your views into consideration when planning the 2006 calendar of events. As an organisation run entirely by volunteers, the many affirming comments received have been much appreciated.

Membership renewals are now overdue! If you have received a reminder notice and not done anything with it, please act now. The strength of our Society lies in its membership. As I perused the survey forms I noticed that the recommendation of our members is a major influence in encouraging prospective members to join, and is something Council hopes will continue to help the Society remain in good health.

Preparing grant submissions can be a time consuming process, but it was all worth it when I received advice from the Federal Department of the Environment and Heritage that the Society had received a grant of \$2000 through the Grants to Voluntary Environment and Heritage Organisations program. The Society enjoys a strong relationship with the Department and for some years it has helped us to meet the costs of *History SA*, and I thank the Department for its continued support. You may not be aware that a grant is also received from the History Trust of South Australia for the publication of the annual *Journal*.

May I thank HSSA stalwart Glen Woodward for escorting a large group of members through the Adelaide Town Hall, the venue of our June Wednesday morning tour. Glen pops up everywhere, and I found him staffing the Botanic Gardens gift shop one Saturday morning. I was surprised to see Glen, and I think he was shocked to see the usually be-suited President in walking gear enjoying a walk from the Torrens weir to Greenhill Road and back via the Botanic Gardens!

I would like to congratulate my friend Mary Hogan on her Medal of the Order of Australia in the recent Queen's Birthday Honours. I first met Mary many years ago as we were both involved in conducting tours of Government House, and we have seen one another at heritage related events (and the cricket!) ever since. Last year Mary conducted HSSA members on a tour of the Medina Grand Treasury, where she is the senior guide. Mary's Award honours her commitment as a volunteer with heritage and arts organisations, and I believe reflects the strength of the Order of Australia in recognising people who 'just get on with it'.

In concluding my column I'd like to share a special moment in my working life. Through my work at Prince Alfred College I have the pleasure of knowing men and women who have links with the school, or who have become known to the school through family members or friends. It was recently my pleasure to welcome to the school a group of people associated with an old scholar, Lyell Keith Swann MM, who was killed on active service just days before the Armistice was signed in 1918.

The occasion was the handing over of Swann's World War I diaries, kept in six little note books from the day he enlisted until the day before he was killed, for safe keeping in the Prince Alfred College archives. The small ceremony and tour of places within the school Swann would have known, was attended by family members, representatives of ex service associations, and by people who had come into contact with the Swann story through the transcribing of his diaries.

The diaries were transcribed by a Townsville based man whose family knew the Swann family, and he has done a wonderful job in preparing them for a wider audience. It was a touching moment when he presented the originals to the Headmaster and, as I looked at the school boys who had joined us, I thought that nearly 90 years on Swann would be pleased that his diaries are in safe keeping, yet accessible to younger people who may learn from his story.

**David Cornish**  
President



The Headmaster of Prince Alfred College, Kevin Tutt (right), accepts the Swann Diaries from their editor, Eldon Bryant.

## Field Trips

### September 2005

Thursday – September 8 10am

#### Artlab Australia tour.

We meet at 10 am on 8 September for a visit to Art Lab Australia, on Kintore Avenue. Chris Holtham will show us around this interesting venue. See Avis for details.

For details and bookings contact Mrs Avis Huckel  
ph.82772953

### October 2005

Sunday – October 9, 10am

#### Onkaparinga Valley heritage tour.

The Onkaparinga Valley Heritage Tour will focus on the township of Oakbank. The tour will include the Onkaparinga Heritage Walk, a visit to Oakbank weavers in the former Pike's Brewery, and background to the contribution of the Johnston family to Oakbank for over a century. Subject to the group's behaviour, a visit may also be made to Melba's Chocolates!

### Change of Date!

Members are alerted to the fact that the date of the Christmas gathering at Old Government House, Belair, has been changed owing to unforeseen circumstances. It will be held on Sunday 27 November, 4-7 pm. Please put this in your diary. Concerning Christmas, our July lecture concerning the Christmas Pageant has aroused many memories. Articles about the Pageant, of up to 500 words, are invited for inclusion in the Christmas edition of the newsletter.

## Book Review

**The Story of Adelaide**, compiled by members of the Queen Adelaide Society, 2004.

Here is a gift, souvenir, and memento of Adelaide elegantly presented and of a size suitable to be carried or sent overseas. The first part of the book is a history of Adelaide, the city, its concept, naming, founding, and development. The second half is about Queen Adelaide herself, Adelheid of Meiningen.

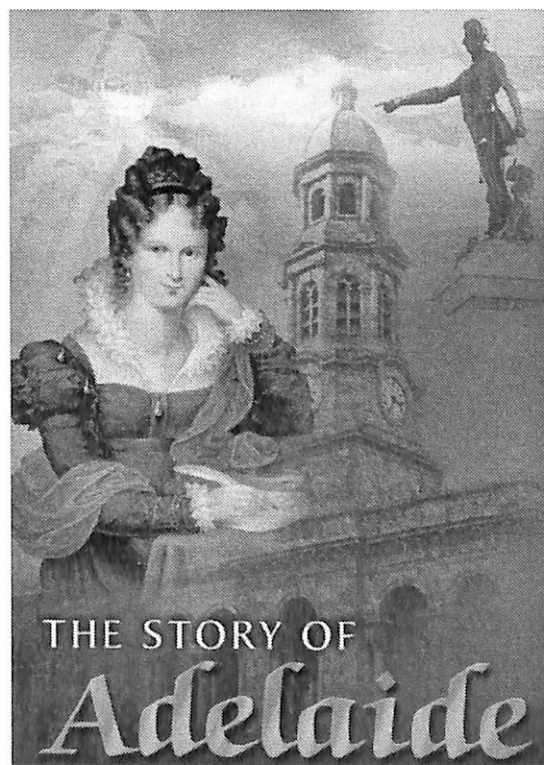
It is a unique compact 32 page book, with many black and white photographs, illustrations, maps, documents and lithographs, some copied from the Royal Collection. The Queen Adelaide Society researched for six years with help from historian Dr Ian Harmstorf and others, acknowledged in the book.

The Lord Mayor as patron of the Queen Adelaide Society will launch the book to invited guests at the Town Hall on 13 August, the birthday of Queen Adelaide. He will also invite people with the name "Adelaide."

Following the example set by Queen Adelaide helping disadvantaged and poor children, the Queen Adelaide Society is donating half the price of each book sold this year to the Cora Barclay Centre in the city.

The book is printed by Openbook Print and available at the Adelaide City Council Customer Centre, 25 Pirie St. Adelaide. The cost is \$10.

**Glen Woodward.**



### Collect your prize!

From Bowmans to Port Wakefield is 6 miles 68 chains and 64 links. How many inches to make it up to 7 miles? The answer is eight thousand nine hundred and ninety-seven

and one eighth inches. Peter Adamson gave the correct answer at the May meeting and is due to collect his prize. Congratulations Peter.

## Graham Jaunay

### *On Special: tickets for South Australia*

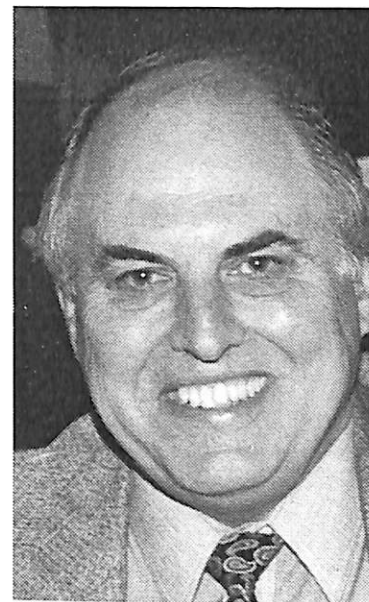
**7.30pm Friday  
5 August 2005**

**Prince Philip Theatre,  
Prince Alfred College,  
Kent Town**

Graham Jaunay (BA DipT MACE AAGRA) is the President of the SA Genealogy & Heraldry Society (SAGHS) and a past president of the Australasian Federation of Family History Organisations (AFFHO). Graham has been an honorary member of the Fleurieu Peninsula Family History Group for his services to that Society since 1996. Formerly a school principal in South Australia in country and city postings, he has been a professional genealogist since 1994.

He has presented seminars on a wide range of family history topics for many organisations and has been a WEA tutor in family history since 1995.

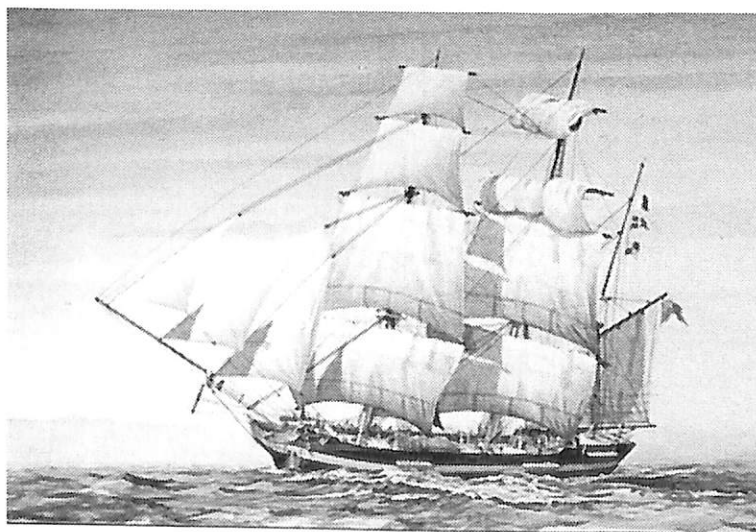
Graham has maintained an extensive website for family historians since 1994. He has been a member of the Australian College of Educators for over thirty years. He is the author of numerous books related to history and genealogy.



Calling on his interests in family history, Graham will address the background to the numerous fare assistance schemes that encouraged all sorts of nineteenth century settlers from the United Kingdom and Europe to settle in South Australia from the very first days of the colony.

The Wakefield scheme required that in the colony there would be two classes of people—those who owned the land and therefore were deemed wealthy and those who worked to keep the landowners living in the style befitting their station. The latter would be the employees of the landowners or the suppliers of goods and services.

The scheme like many social experiments attempting to structure a society was unsuccessful in that too many other pressures were placed on the process—escaping convicts from the east, imported poverty, money making schemes disguised as good works, lack of funding, less than truthful applications for assistance, etc, etc. Sure, the scheme built up a viable population base relatively quickly, but it failed to bring about the Utopia expected by the original South Australian social engineers.



Graham will also detail why some shipping records have survived while others have not by detailing how nineteenth century bureaucracies generated shipping documents. Their primary purpose will be examined in an effort to clarify how historians can use the available material effectively. The talk will reveal the location of a multitude of supporting materials available in South Australian repositories that may fill the gap in the paper trail created by missing passenger lists. It will reveal how some of the non-passenger list material is in fact far more useful to historians seeking information about emigrants.

## Julie Holbrook Tolley

### *Women in the Wine Industry in the Barossa Valley 1839-2003*

**7.30pm Friday  
2 Sept 2005**

Prince Philip Theatre,  
Prince Alfred College,  
Kent Town

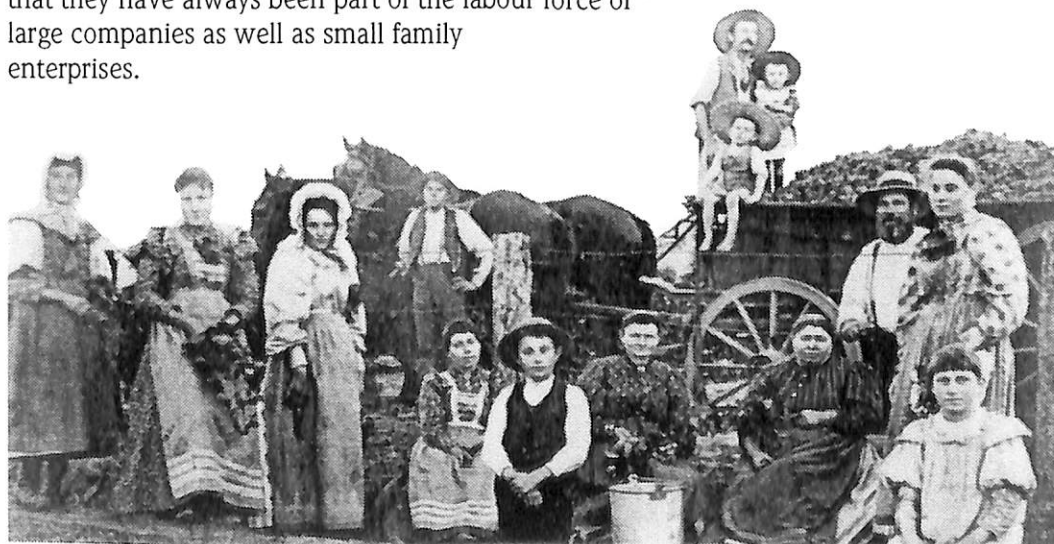
Julie is completing her PhD on the history of women in the S.A. wine industry. Julie has presented papers in several forums including the first conference on the history of wine held at the University of Avignon in 2004.



She has found evidence to suggest that one of the earliest vineyard owners was a young woman from England. This was not in the Barossa. Women have made a significant contribution to wine production in the State but this has usually been in the lower levels of work in the vineyards, such as picking and pruning. Even now women's achievements in the wine industry as in other rural industries, are only being slowly recognised. Published accounts of the history of wine-making have been written largely from a male perspective. In 1952 the influential wine writer Walter James claimed that "Women are not worthy of the custody of wine."

It is a statement that Julie will contradict in her lively presentation. To do this she will draw on a variety of primary sources including diaries, letters and photographs.

Women living in a rural environment have customarily undertaken additional work connected with food provision, in the area around the home, known as the home paddock. At peak periods of farm activity, wives of grape-growers were expected to venture beyond the home paddock, and participate in work such as picking grapes and pruning vines. Although until recently women were excluded from careers in the wine companies that developed during the first half of the twentieth century, there is evidence that they have always been part of the labour force of large companies as well as small family enterprises.



*Members of the Gramp family and helpers at vintage, Rowland Flat, 1898*

*(Courtesy Orlando Wyndham Group Pty Ltd)*



### June Meeting photos

*Left, Dr David Symon shows HSSA Vice President Dr Geoffrey Bishop cloth featuring the Sturt Pea.*

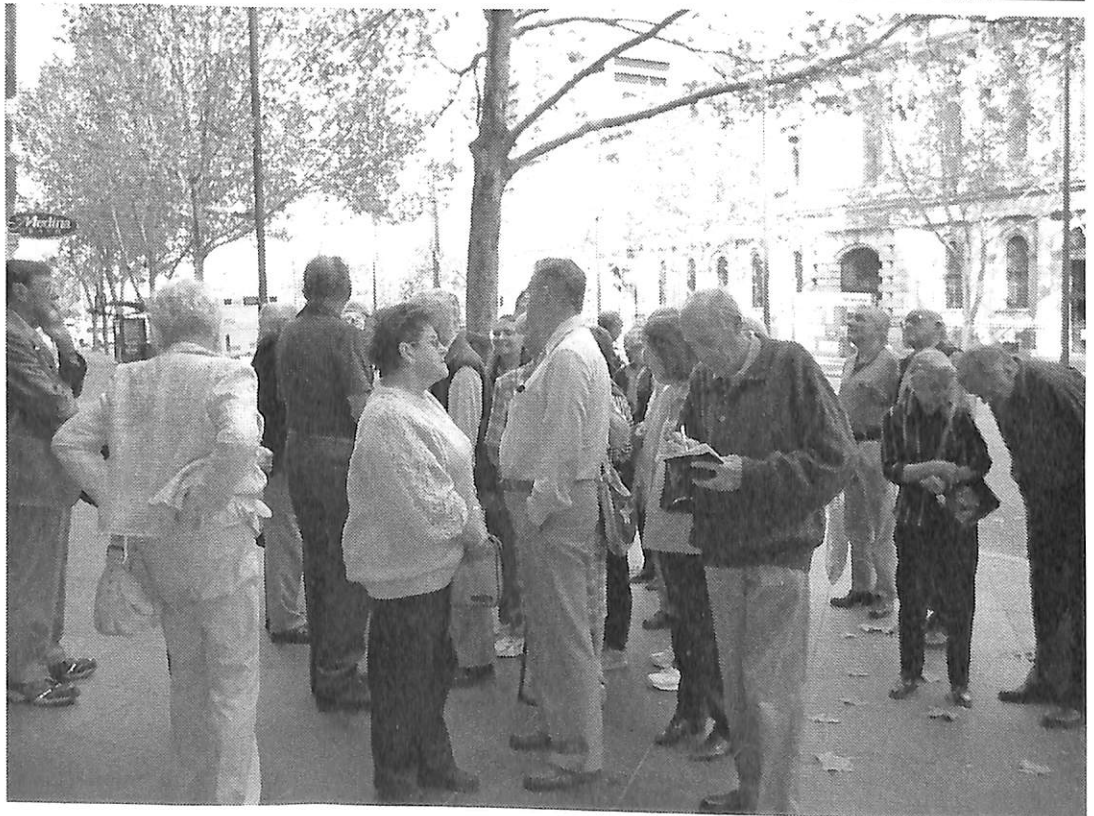
*HSSA members enjoy the many examples of the use of the Sturt Pea displayed by Dr David Symon, guests speaker at the June meeting.*

### Members' Questionnaire

A reminder to members to return this information to the Council so that our activities can be planned according to your wishes. Letters to the Editor are invited concerning this survey or other matters of interest. Also short articles of historical interest are welcome.



*Members gather on King William Street for the June Wednesday morning tour, which visited the Adelaide Town Hall. The mid week tours were introduced in 2004 and have been a great success.*



# State History Conference, a Visitor's Point of View

By Colin Deed

Early on Friday 27 May we set out for the fourteenth State History Conference, a "Blast from the Past" at Whyalla. This was our ninth History Conference and we knew that we would not be disappointed. The country venues always have a great atmosphere.

During the day we stopped and reflected on the history of the towns on the way up, reading roadside plaques and monuments. We arrived at Whyalla at about 3.30 pm and booked into our cabin at the Hillview Caravan Park. We then drove about the town to become more familiar with the conference venue.

Avis's policy is to arrive early at any event to choose a seat, and relax. Our first item at this Conference was the tour of the *HMAS Whyalla* and the Maritime Museum, at 5.15pm. (We arrived at 5pm.) We were able to have a thorough inspection of the land-locked ship and museum. The complex is a credit to the Museum staff, who gave us some wonderful information. This was followed by a reception hosted by the Whyalla City Council with drinks and nibbles. Drinks and nibbles in the country resemble a main course in the city.

Saturday morning, with the official opening being at 9am, we arrived at 8.15 for coffee and to choose where we wanted to sit. The Opening was conducted by Margaret Anderson, Director of the History Trust of South Australia, the Honorable John Hill, Minister for Environment and Conservation, and Barry Croft, Elder for the Barngarla people. The first session, entitled "Whyalla, the Desert and the Sea," was presented by Greg Drew, Paul Mazourek, and Christine Garnaut. This opening session set the scene for what was to come, and we were not disappointed. Morning tea followed, with a wonderful array of cakes and biscuits. Then came the hard part! We had to choose which session out of three to attend; No.1, "Heritage in its Diversity, Eyre Peninsula and the Outback" presented by Sarah Laurence, Hamish Angas, Robyn Hartell, Duncan Ross-Watt and Terry Arnott; No.2, "Stories from the Land" presented by Ruth Anderson, Shirley Branson and Pauline Payne; No.3, "Exploring a Rich Deposit; Regional History in the States Records Collection" presented by Lucy Gaylard, Andrew Wilson, Cissy Sultan, Kathy Bradley and Travis Gottschutze. We chose No.1.

Next in line was lunch, a great assortment of rolls, sandwiches, fruit, and juices. During the break we had the opportunity to talk to others from branches of the National Trust, and from Museums, Historical Societies, Community Associations, Government Departments, and Professional Historians, people from different walks of life

but with the same interests. After lunch more choices. Which tour had I chosen? No.1 Iron Knob and Township, No.2 One Steel Whyalla Steel Works, No.3 Freycinet Trail, No.4 Whyalla City and Hummock Hill. We had chosen No.3.

Making the choices was hard. Was it the right one? When you talk to people who have made other selections you wish you could do all on offer as everyone is so enlightened by their activities. We had two hours to rest and to prepare for the Conference Dinner. The meal was just something, superb food interspersed with a quiz. Our table came second, thanks to all who contributed and to Glen Woodward who wrote down *most* of the correct answers.

Sunday morning, we arrive *very* early remembering Avis's policy. Coffee and interaction with fellow conference goers. 9.30am first session of two choices. No.1, "New Arrivals New Responses," given by Lucy Turonek, Christine Finnemore and "Whyalla Rural Australians for Refugees", or "Hard Graft" by Kevin Jones, Tom Gara, and Cameron Raynes. We chose No.2.

Avis was tickled pink by this choice as it provided information about her late Uncle's life in and around Ernabella as a dogger and well-sinker. Morning tea came along with scones, jam, and cream, marvellous! 11.20, second session, three choices. No.1, "History and Tourism," by Peter Cahalan, No.2, "A Clouded History," by Kevin Kakoschke, R, Keith Johns, and Tom Gara' and No.3, "Whyalla Stories," by Colin Stanton, Sue Scheiffers, and Pat Sumerling. We chose No.2. Mount Laura homestead, only a short walk away, was the venue for a barbecue lunch. Another feast!

After lunch our last session consisted of "Whyalla, the Big Picture," presented by Peter Stanley and Dean Jaensch. All of a sudden it was 3.30 and Margaret Anderson's closing. Where had the time gone? It had finished all too soon. We felt that we should apologise to speakers we did not choose.

We had a pleasant relaxing drive home on Monday turning off through Port Germein Gorge and down through the Clare Valley to arrive home feeling enriched by experiencing another great week end of history and friends.

Remember you too can have a "History Conference Experience."

**Avis and Colin.**

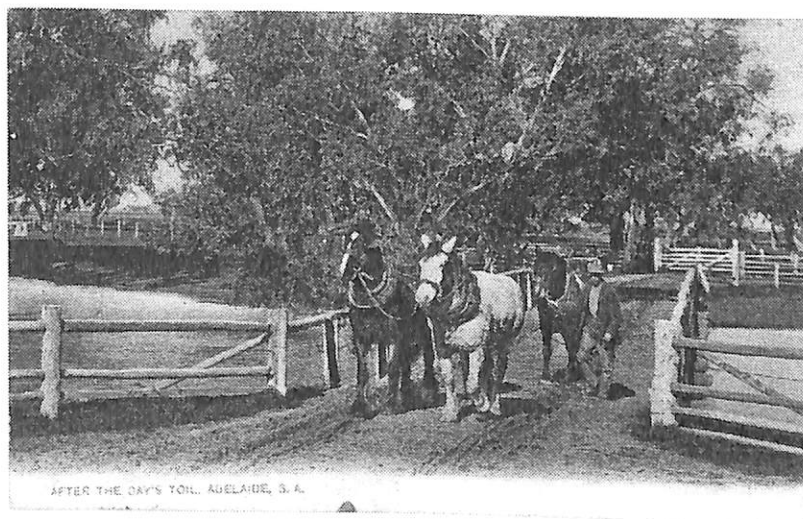
## Philicia Antiques and Collectables

This amazing premises situated at 317 Goodwood Rd, Kings Park, specializes in buying and selling "Old Wares." As well as the more usual items such as china, glass ware and jewellery there is a collection of tins and packaging. The ephemera collection includes photographs, bill heads, tickets, catalogues, militaria, magazines, buttons, button day badges, cigarette labels, and post cards.

The photographs and post cards are categorized. For example there are boxes of photographs exhibiting the fashion of the decades of the 1870s, 1880s, and 1890s. There are studio photographs of children from the 1860s onwards. Wedding styles and mourning fashions are similarly sorted. Jewellery, hair styles, laces, and accessories have been filed according to the era. The post card collection reflects Australiana, sea scapes, and the first greeting cards. There are Victorian era scrap books, S. A. Railway time tables, railway magazines, and pianola rolls. "The Children's Hour," the magazine familiar to students of State Schools up to the 1950s, is collected as far back as 1910.

The collections have been used by researchers in the film, drama, and magazine industry. Scott Hicks is a regular visitor. Graphic Arts students use the collections for periodical portfolios. As well collectors and researchers world wide use the resources. An example is the Facial Hair Group, an American organisation interested in how the fashion in beards and moustaches changes over time.

The proprietors have future plans for expansion. An on-line service will become available. For those interested in buying and selling, research, or just browsing, business hours are Monday-Saturday 10 am-5.30 pm, and Sunday 12 noon-5.30pm. The contact phone number is 8357 8077. E-mail [philicia@tpg.com.au](mailto:philicia@tpg.com.au).



### One hundred and twenty years ago

The University of Adelaide's Medical School dates from 1885. In 1881 Dr Edward Charles Stirling became a part time lecturer in Physiology. At this stage the University Council planned to provide the first two years of a five year course, with students studying interstate or overseas to complete the course. However, over the next few years money donated by Sir Thomas Elder and John Howard Angas enabled the University to appoint professors of anatomy and chemistry. A small dissecting room was provided and a building to house the medical school was built at the back of the University. The design was so plain that it was considered as being no more ornate than a 300 gallon iron tank. (from the Adelaide University Magazine *Lumen*, Winter 2005 edition.)

## Sea-Witch Images

“Sea-Witch Images” is located on the ground floor of the beautiful old Weman Sailmakers Loft in the heart of the heritage listed Historic Precinct of Port Adelaide. The building at 117 Lipson Street is part of the S. A. Maritime Museum’s property. Mr Jeff Hill, professional photographer, framer and art restorer is involved in the business, with Christine Courtney and Robin Moulds. With the Friends of the South Australian Maritime Museum Christine was instrumental in organising the publication of *Port Adelaide, Tales from a Commodious Harbour*, by John Couper-Smart. This project led to the idea of making the images readily accessible to the public.

The aim of “Sea-Witch Images” is the preservation of the past, for the future. On display are reproductions of rare historic images from plate glass negatives, original photographs, and postcards printed during the golden era of postcard production, 1880-1914. Some are from the extensive holdings of the Ron Blum Collection of over 40,000 images. Subjects include Adelaide and suburban streetscapes, rural South Australia, and shipping. Theatrical images are also available. Research into the historical background of many of the images is continuing. Special lectures to specific interest groups can be arranged.

The first of these, to be held at the premises on Tuesday 30 August, is entitled “Theatrical Fashion, 1890’s Floosies to 1920’s Flappers.” The premises are open 11.00am-5.00pm Wednesday-Sunday. Contact phone 041159079.



*An Early Adelaide Hearse. Photographer unknown, c1890*

### Ninety Years Ago

Haigh’s Chocolates opened close to its Beehive Corner premises on 1 May 1915. Alfred Haigh, great grandfather of joint managing directors Simon and Alistair Haigh, bought the business from Carl Stratmann, and it included equipment and recipes. The confectionery was made on the upper floors of the Beehive Building. Haigh’s factory in Parkside is on the block bought by Alfred in 1919, when the manufacturing process outgrew the Beehive Corner premises. More than 200 varieties of Haigh’s chocolates are still made by hand. (adapted from *The Advertiser*, 30 April 2005.)

### Sixty Years Ago

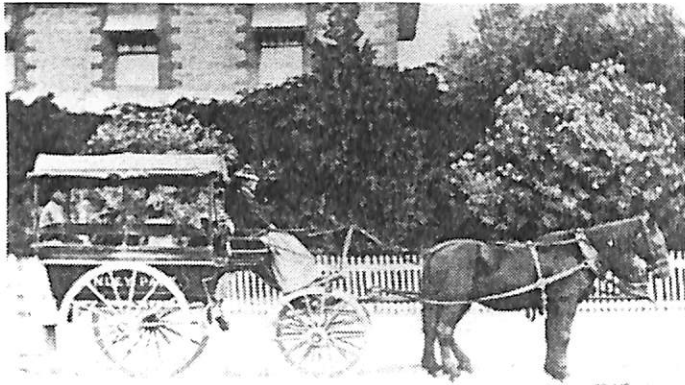
John Curtin, Australian Prime Minister during World War Two, died in office on 5 July 1945. Thousands lined the streets as his funeral procession made its way through Perth. His epitaph reads; “His country was his pride, his brother man his cause.” (Adapted from *The Australian* 23 April 2005)

## A Visit to Mitcham General Cemetery during History Week

The original land for the General Cemetery was acquired in 1854. The cemetery was laid out according to a circular plan so that horse drawn hearses and carriages could continue in a forward direction as these vehicles were very cumbersome to back. The design has been modified since the mid 1950s and graves placed haphazardly to fill in spaces. At this time motor transport became the norm and less room was needed for the reversal of hearses. Now it is difficult to negotiate a foot path between graves.

Plot G7 contains the grave of John A H Gardener, who died on Christmas Eve, 1886, aged 29. He was killed fighting a fire which had broken out in the premises of R. C. Castle and Co., Rundle Street. A plaque commemorating his death has been placed near the rotunda in Elder Park.

Plot C 20 is the resting place of Phillis Kinsman, 1799-1866. Phillis ran the first passenger conveyance from Mitcham to Adelaide, beginning in 1852. The spring cart had carpet covered backless seats for 7 passengers, and the driver. The service ran thrice weekly, Monday, Wednesday, and Friday, and cost 2/6 return. The Honourable Thomas Playford married Phillis's eldest daughter.



*Phillis Kinsman and her carriage, 1850's. (from Mitcham Local History Service)*

Cyril Opie, of bakery fame, is buried in Plot A 74/5. He lived from 1923-1993. A chef's hat has been carved into his head stone.

Other noteworthy graves are those of John Gill who lived between 1824 and 1873, and who was Head Turnkey of the Adelaide Gaol, and Joseph Foureur, 1842-1935. Joseph set up a brewery on the corner of Price Avenue and Murray St, Clapham, making champagne and non alcoholic beer and cordials.

The site of the first burial in the cemetery, that of a 27 year old who died of consumption, is hidden under an old piece of galvanised iron. Legend has it that, due to flooding problems in the cemetery, coffins and bones move down hill under the surface. Be that as it may, should we be doing more to preserve this valuable historical resource? Our city and rural cemeteries have many tales to tell.

(Researched by volunteers at the Mitcham Local History Centre.)

## Bank S. A. Heritage Icons List

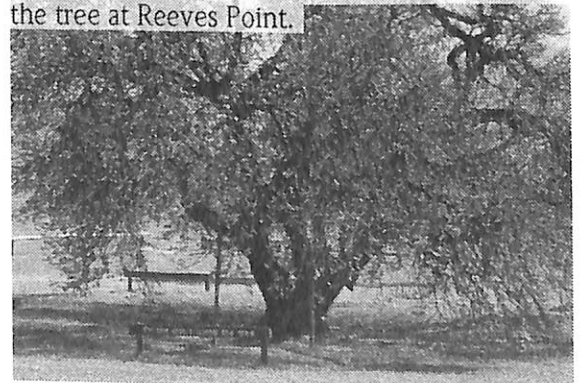
Annually this list is prepared in conjunction with the National Trust of South Australia. The list records items of cultural significance in South Australia. Eight items have been included in 2005. For these listings the Consultant Historians have been Pat Sumerling and Robert Martin. One listing is the mulberry tree at Reeves Point near Kingscote. The article in the brochure put out by Bank SA, explaining the listings, is included here:

*Just who planted this tree is a matter of controversy... and family honour. One candidate is Charles Powell, the South Australia Company's gardener, who, in 1836 planted a number of trees brought from England to establish the colony's first orchards.*

*Some say it was the work of the South Australian Company's eccentric German geologist, Johannes Menge, who like many other colonists soon moved to the main land. But the Beare, Kleeman, Christian, and other families are all contenders. The Kleeman family's claim is perhaps the most romantic. Did F. W. Kleeman plant it in memory of his wife? She died just before his ship reached Kangaroo Island. That would put the date of planting at 1837. The planting was replicated in 1969 when one of the original tree's off spring was planted at the Jacob Creek Visitors Centre in the Barossa Valley during a Kleeman family reunion.*

*There's also a replica mulberry tree at Glenelg, near the Old Gum Tree. A plaque commemorates the historic link of Kingscote's mulberry tree with the birth of the state. Another of the tree's few surviving off spring grows right next to its parent at Reeves Point, both now protected by a wind break of Athol pines.*

The tree, *Morus nigra*, is native to Western Asia and can live up to 500 years. Members of the Kingscote Lions Club make and sell jam from the tree at Reeves Point.



By Neil Thomas

Recent additions include:

The papers of John Clifford Tolley (1922-2002), a member of the Tolley wine and spirits family, reflect his passion for collecting and documenting South Australian history, in particular the stories of the settlement of the South Coast region and River Murray shipping. The collection includes his research into various family lines, as well as business and estate documents relating to the family company A.E. & F Tolley Limited. Peter Knoblauch, one of the members of the South Australian pop music male vocal quartet *The Four Tones* from 1958-1965, has donated three scrapbooks containing photographs, programmes, repertoire lists, music and pages from early pop music magazines, which tell the story of pop music in this state for the first half of the 1960s decade. The group performed for several years at the popular Princeton Club venue at the Burnside Town Hall. (The Knoblauch scrapbooks will be available after microfilming.)

The papers of John Hinton Edmonds (1911-1990), a farmer from Eyre Peninsula, give an interesting insight into the life of a farmer in the second half of the 20th century. His diaries cover the years 1928-1990, a scrapbook he began in 1920 when aged 9, and there are several movie films he took of farm and country life in the Wudinna area in the 1960s (available later in video format). There is also a minute book of the *Motor Manual Goodwill Car Club*, of which he was an active member, for the years 1953-1956. Betty Westwood (1917-2004) had a nursing career including service in World War II. She was later the matron at Geelong Grammar School in Victoria and St Peter's College. In her later life she became interested in environmental and conservation issues, which are represented in her papers.

Additions to the Clement Sabine group include his diary of the voyage out on the *Derwent* from November 1852-March 1853. Besides the account of the voyage there are his impressions of Adelaide and the Port and surrounding country. The last pages record the names of the captain and crew members, the cabin and intermediate passengers and a very detailed plan of the cabin and 'cuddy' accommodation. As well there is a letter to him from his son Charles Glenn Sabine, a member of the Fourth Imperial Bushmen's Contingent fighting the Boers in South Africa in August 1900. Mention is made of the British troops chasing the Boer leader Christian De Wet and the engagement at Vredefort in late July that year (where a doctor from New South Wales won Australia's first Victoria Cross). In detail he describes how the British forces were forced to commandeer food supplies from Boer households and farms across the Vaal River, their ammunition, and his personal opinion of the Boer soldier.

Among the many oral history projects completed are those for the Adelaide Kindergarten Training College interviews of earlier graduates; 'One Great Journey: the story of the Travellers' Aid Society in S.A.' made by Rob Linn, and his interview with Emeritus Professor Freda Briggs for the National Library of Australia Eminent Australians Interviewing Programme.

**Deadline for newsletter articles and entries August 20, 2005.**

**Historical Society of South Australia Inc.**

**PO Box 519**

**Kent Town, SA 5071**

**email or secretary@hssa.org.au**

**website www.hssa.org.au**

President: Mr David Cornish

Vice-President: Dr Geoffrey Bishop

Secretary: Mr Terry Saunderson ph 83542736 (business hours)

Treasurer: Mrs Avis Huckel 8277 2953

Newsletter Editor: Janet Callen 8278 8922 or newsletter@hssa.org.au

Journal Editor: Dr Jenny Tilby Stock ph 8303 5755, email journal@hssa.org.au

ISSN 1444-8459

*History SA* is published with the assistance of a grant from the Federal Department for the Environment and Heritage. Articles may be reproduced without permission provided they remain unaltered and *History SA* is acknowledged.

## Coming Events

### **Brighton Historical Society**

Meets at 8 pm on the first Thursday of the month in the Kingston Room, 24 Jetty Rd., Brighton. Speakers are announced in the Community Noticeboard section of the *Messenger* newspaper. Contact ph. 8298 1959.

### **Burnside Historical Society**

Meetings are held in the Burnside Community Centre (corner Portrush Rd and Fisher St) at 8 pm on the third Monday of the month. Visitors welcome.  
15 August: "A Medieval Tale of a Man and his Mistress," speakers Ian and Joan Stratford. Contact ph. 8379 4090.

### **Campbelltown Historical Society**

Meetings are held at 8 pm at 2 Newton Rd Campbelltown.  
9 August: Des Bowen of Family Funerals will speak on the development of his industry in South Australia.  
13 September: Marj Boyer, a young 92 year old will be interviewed on farming life in the Riverland in the early 1900s. Contact ph. 8266 0415.

### **East Torrens Historical Society**

Meets 8pm at the Adelaide Hills Natural Resource Centre, Crescent Avenue, Norton Summit. Contact ph. 83903138. 14 September: "The Dunn Family, their Influence on the Development of the Adelaide Hills."

### **Enfield and Districts Historical Society Inc.**

Meetings 7.15 pm 4th Wednesday of the month at Enfield Community Centre, 540 Regency Rd, Enfield.

### **Friends of the "Marion" and Mannum Dock Museum**

Notice is given of the Rockford Steam Powered Dinner Cruise to be held 22, 23, 24 July. Also the Mannum-Morgan cruise from Tues 27-Fri 30 Sept., and the Morgan-Mannum cruise from Fri 14 -Mon 17 Oct. will be heavily booked. For bookings contact Mannum Visitor Information Centre, ph. 8569 1303.

### **Kensington and Norwood Historical Society**

The Society meets at 8 pm on the 1st Wednesday of the month in the Don Pyatt Room of Norwood Town Hall.  
3 August: "George Giffen and the Norwood Football Club." Speaker Bernard Whimpress.  
Details are available from Rachel McInnes ph 8363 9003.

### **Port Adelaide Historical Society**

Meets the third Wednesday of the month in the Semaphore Library at 8 pm. Contact ph. 8248 3344.  
17 August: "Reminiscences of the Port." Speaker Mr John Simons.  
21 September: "Photography," photos and commentary by Mr Bob Thurjussen.

### **Postal Stationery and Postal History Society of Australia**

Meets on the second Tuesday of the month in the Campbelltown Uniting Church Hall, 609 Lower North East Rd., at 7.45 pm.  
10 August: "Airmails."  
14 September: "Post cards, Voyaging around the World."  
Display and auction at every meeting. Visitors welcome.  
Contact ph. 8260 3352

### **Salisbury and District Historical Society**

Meets on the second Wednesday of the month at the Folk Museum, Ann St., Salisbury, at 7 pm. Contact ph. 8258 3016 10 August: "Buttons." Speaker, Ms Zweck.

The National Archives of Australia, State Records, and the State Library of South Australia present "**Motors, Wings, Keels and Things, an archival view about records of Transport.**" at the State Records Training Room in Leigh St Adelaide on 20 August 2-4pm. Bookings essential ph. Lesley Bolton 8204 8750.

## **Exhibitions**

### **History Trust of South Australia**

Torrens Parade Ground, Victoria Drive. Ph. 82039888  
The exhibition "Gallipoli, the South Australian Story" will close in August. It commemorates the ninetieth anniversary of the Gallipoli campaign. Opening hours 9.30am-3.30pm.

### **National Railway Museum**

Lipson St, Port Adelaide. Open Daily 10am-5pm.  
The museum has over 100 exhibits in two huge pavilions, representing railway operations on the three major railway gauges of Australia. It is possible to book the 1940s Cafeteria Car for birthday parties of all ages. Contact ph. 8341 1690

### **SA Maritime Museum** 126 Lipson St Port Adelaide Open daily 10am-5pm.

Until August 2005 the exhibition "Wrecked, Tragedy and the Southern Seas" is on display. 850 ships have been wrecked on our coasts and the exhibition reveals some of their stories.

### **West Torrens Railway Signal, Telegraph and Aviation Museum.**

112 Marion Rd. Brooklyn Park. Open Sundays 1pm-4.30pm or by arrangement. Includes railway signalling equipment, level crossing gongs, telephones and telegraph, and much more. There are working models to try. Contact ph. 82345304 or 84437651.