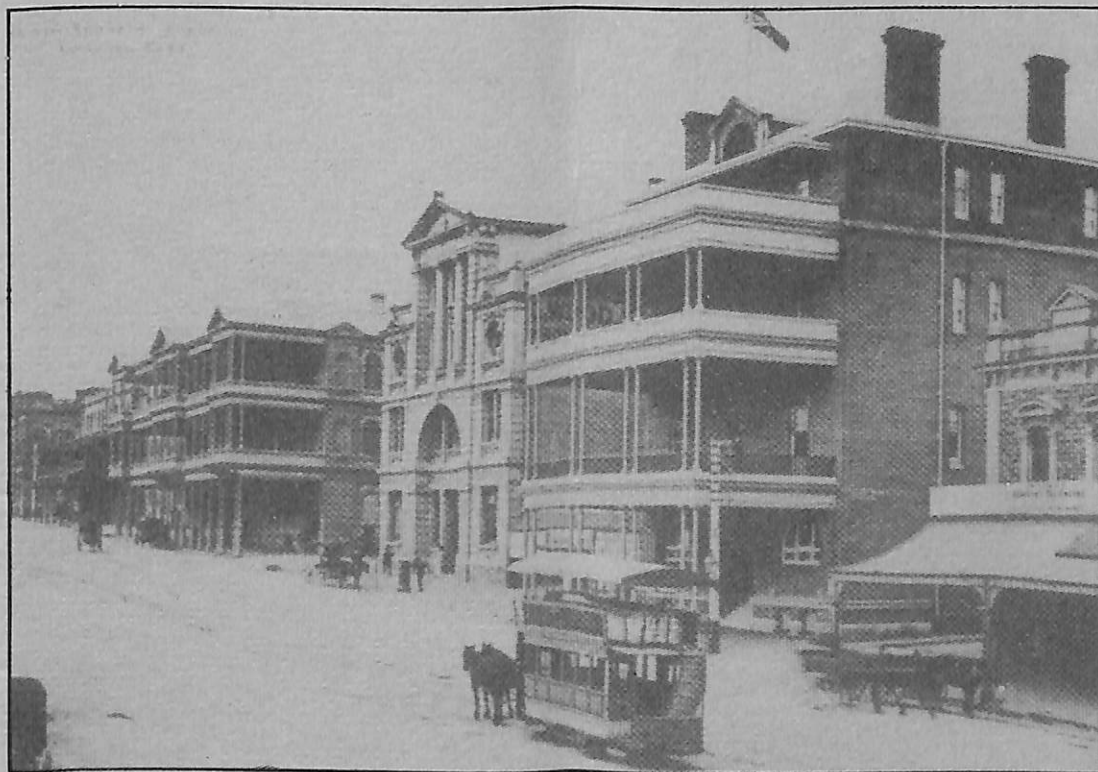




The
Historical Society
of
South Australia
Inc.



Newsletter No.80 January 1989



THE HISTORICAL SOCIETY OF SOUTH AUSTRALIA Inc.

Institute Building, 122 Kintore Avenue, Adelaide 5000

OBJECTS

- (a) to arouse interest in and to promote the study and discussion of South Australian and Australian history,
- (b) to promote the collection, preservation and classification of source material of all kinds relating to South Australian and Australian history,
- (c) to publish historical records and articles,
- (d) to promote the interchange of information among members of the Society by lectures, readings, discussions and exhibitions,
- (e) to co-operate with similar societies throughout Australia,
- (f) to do all such things as are conducive or incidental to the attainment of the above objects or any of them.

COUNCIL

PATRON:	Sir Walter Crocker, K.B.E.
PRESIDENT:	Dr R.P.J. Nicol
VICE-PRESIDENT:	Dr A.J. Stimson
SECRETARY:	Ms A. Huckel
TREASURER:	Mr W.S. Stacy
MINUTE SECRETARY:	Miss T.M. Donnellan
MEMBERSHIP SECRETARY:	Mrs E. Ulbrich
JOURNAL EDITOR:	Dr J.D. Playford
NEWSLETTER EDITOR:	Dr A.J. Stimson
MEMBERS:	Mr R.M. Gibbs, A.M. Dr P.A. Howell Mr M. Keain Mr R.H.B. Kearns, M.B.E. Ms S. Marsden Mr B.J. Samuels Ms P. Sumerling

WORD PROCESSING:	Ms V.J. O'Neill
AUDITOR:	Mr G. Ralph

FOUNDED IN 1974

Cover photograph. A horse drawn tramcar in North Terrace with the South Australian Hotel at left centre. The transition from horse to electric traction will be discussed in Dr John Radcliffe's March lecture. Photograph Mortlock Library.

FORTHCOMING EVENTS

Friday, 3 February 1989, 8 p.m.
Venue: State Library Lecture Theatre

First meeting for 1989:

Vic Reeves: Film History of the Early Days of South Australia

Vic Reeves is well known as a film archivist and conservator of early film material. He began his training in the theatre in the 1930s and has collected and shown film material since the 1950s. Vic has transferred much fragile film from 35 mm nitrate to 16 mm polyester and will share some of it with Historical Society members. Two films he will be showing have only recently been transferred. A complete set of Vic's collection has already been lodged with the National Archives. Along with the films themselves, members will be able to enjoy Vic's fascinating narration and his stories about the early film history of South Australia.

-oOo-

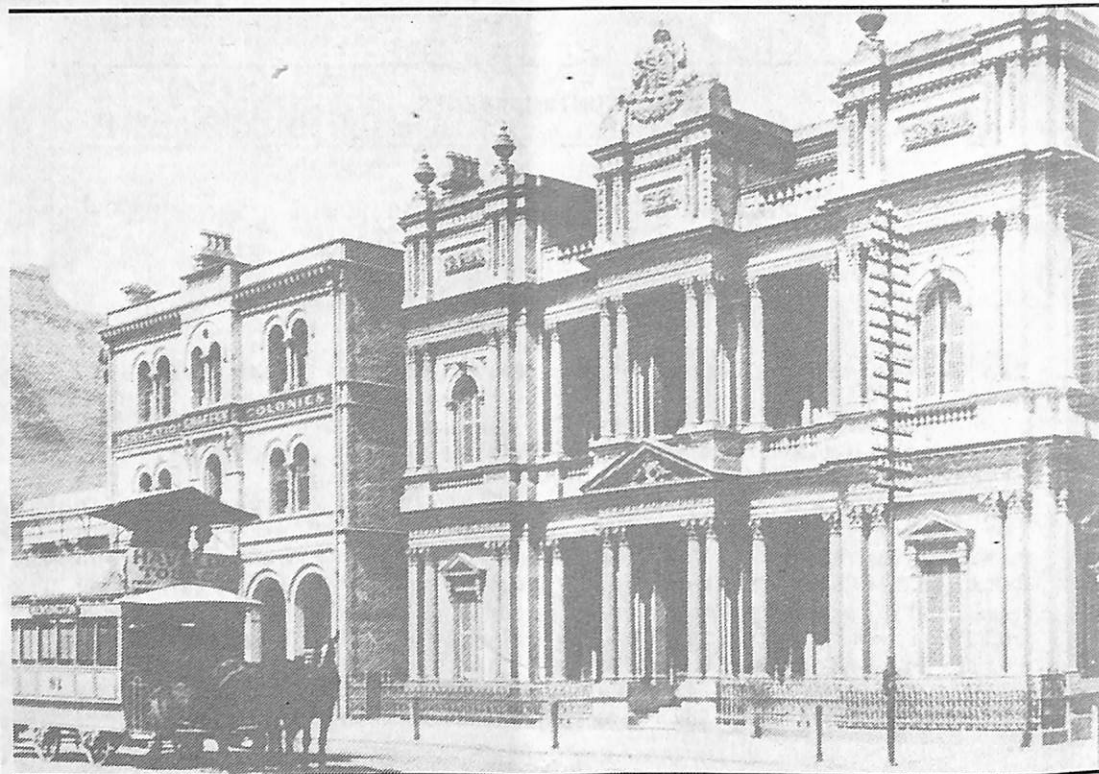
Friday, 10 March 1989, 8 p.m.
Venue: State Library Lecture Theatre

Dr John Radcliffe: The Electric Shock - 80 years of Adelaide's Electric Trams

John Radcliffe's lecture will look at the introduction of Adelaide's electric trams in 1909 and their subsequent history. The passing of the era of the horsedrawn tram was mourned by many people but the arguments in favour of electric traction - speed and public health - were usually seen as compelling. The lecture will be illustrated with many slides.

Dr Radcliffe is Director General of Agriculture, Chairman of the History Trust, and a foundation trustee of the Australian Electric Transport Museum at St. Kilda. Members should note that the Friday lecture will be followed two days later by a field trip to the St. Kilda Museum.

-oOo-



A horse tram outside the Bank of South Australia, King William St. Mortlock Library photograph.



An electric tram in Melbourne St 1909. Mortlock Library photograph.

*** FIELD TRIP ***

Sunday, 12 March 1989

Australian Electric Transport Museum, St Kilda

Members are invited to visit the Australian Electric Transport Museum at St Kilda as a fitting follow up to Dr Radcliffe's talk.

The Museum is holding a Vintage Transport Day from 10 am to 5 pm. A new display gallery will be opened by the Premier at 2.30 pm and a 'Bouncing Billy' tramcar will return to service. Vintage cars, buses and commercial vehicles will also be on display. Usual museum charges will apply.

Members should meet at the museum at 2 pm.

-oOo-

SOCIETY NEWS

Subscriptions are now due

This issue is accompanied by a tear-off membership renewal.

Subscriptions for 1989 are unchanged from 1988 but the bad news is that they are now due.

Besides renewing your own membership, Council would be grateful if you would spread the word about the Society and its activities. Membership hovers a little short of the 500 barrier so please bring friends along to Society activities when you think they may be interested. There is no obligation to join and new faces are always welcome.

* * * * *

1989 Programme

This issue is also accompanied by the Society's programme of lectures and field trips for 1989. Council gave a good deal of thought to the programme in the light of members' responses to the questionnaire circulated with the Newsletter of January 1988. Those of us on Council hope you enjoy the year's lectures and excursions.

* * * * *

Nominations for the Society's Council

Nominations are hereby called for the position of President, Vice President, Treasurer, Secretary and eight other positions on Council.

Nominations, signed by both the proposer and nominee, should be lodged with the Secretary of the Historical Society of South Australia, Institute Building, 122 Kintore Avenue, Adelaide 5000 by Thursday 9 March 1989. The new Council will take office after the Annual General Meeting in April.

* * * * *

From the State Historian

20 November 1988

Dear Dr Stimson

During 1988 much publicity was given to the Big Events of the Bicentenary and very little to the many smaller but more enduring projects which were also funded by the Australian Bicentennial Authority.

I should like to publicise the achievements of the historical projects which were funded in South Australia. Some of them have been completed, such as the history of Robe's Old Telegraph Station and the Robe heritage guides. Others are continuing, such as the establishment of numerous local history collections, for example at Loxton.

I'd be grateful if newsletter readers could write to me describing the results and future plans for these projects. My address is: History Trust of South Australia, 122 Kintore Avenue, Adelaide 5000.

Yours sincerely

Susan Marsden
State Historian

NEWS

HISTORY TRUST ANNUAL REPORT

The History Trust of South Australia's Annual Report for 1986/7 is now available free of charge by writing c/- Institute Building, 122 Kintore Avenue, Adelaide 5000. Meanwhile members may be interested in the following extract from the report. The writer is Dr Peter Cahalan, Director of the History Trust.

HISTORY TRUST OF SOUTH AUSTRALIA

ANNUAL REPORT, 1986-87

Overview

The face of the History Trust of South Australia was transformed during 1986-87. The Trust opened two major museums fully to the public and closed another pending a review of its future. Attendances at the Trust's museums more than doubled.

Significant achievements during the year were:

- The opening of the permanent exhibition galleries of the Migration and Settlement Museum.
- The opening of the South Australian Maritime Museum.
- The completion of the Jubilee 150 Oral History Project, 'S.A. Speaks'.
- Increased attendances at Trust museums with attendances doubling from the 200 000 mark—passed for the first time in 1985-86—to over 410 000, with more than 40 000 people visiting other Trust venues.
- The appointment of project staff to handle the development of the Port Adelaide Railway Museum as a Bicentennial Commemorative Project and the resolution of most planning issues related to the proposal.
- The development of a highly successful volunteers program at the South Australian Maritime Museum.

Other features of the year were:

- An increased level of on-site contact with local and specialist museums and a major review of the policies and procedures of the Museums Accreditation and Grants Program.
- A highly successful Bay to Birdwood run with 1 809 entries and more than 17 000 people attending the Mill on the day.
- The opening of *Devils, Drugs and Doctors*, the first travelling exhibition mounted by the History Trust in conjunction with the International Cultural Corporation of Australia.
- The publication of various Jubilee 150 books to which Board members and staff of the Trust had made a contribution.
- The appointment of the Trust's first permanent Director of Administration and Finance.
- The development of much stronger planning mechanisms and the growth of resources sharing between the Trust's various divisions.
- Greatly increased interaction between the History Trust and the State's tourism industry.
- A closer relationship between the History Trust and the National Trust of South Australia.
- Close co-operation with the Mortlock Library of South Australiana, the State Heritage Branch and other relevant agencies.

Areas of Concern

- A reduction in available storage facilities coupled with an inevitable increase in the Trust's collections.
- The Arts Funding Review Committee's recommendation that the History Trust ultimately become a division of the Department for the Arts.

The Trust recognised that there was some logic in the recommendation. Other major 'heritage arts' organisations—the South Australian Museum, the Art Gallery of South Australia, the State Conservation Centre and Carrick Hill—are divisions of the Department.

PORT DOCK STATION RAILWAY MUSEUM

However, the Trust is substantially different from those bodies in that it relies very heavily on its own sources of revenue. In 1986-87 it raised over \$730 000 from admission charges to its museums and through its various commercial operations. In 1987-88, with the South Australian Maritime Museum open for a full year, the Trust's revenue is expected to exceed \$950 000. Both revenue figures exclude substantial corporate sector support via sponsorships in cash and kind. This makes the Trust one of the largest revenue-generating museum agencies in Australia. There has been inexorable pressure on it from the Government to continue to improve its level of self-support. The Trust fears that the constraints inevitably arising out of working within the framework of a Government department are likely to hinder its capacity to respond flexibly to the economic and cultural challenges before it.

It is interesting in this context to note the comment of Dr Neil Cossons, Director of Britain's Science Museum and doyen of the new breed of entrepreneurial museum directors in Britain:

On a secure foundation of public funds ... museums can then play the market, deriving income from any number of sources. To do this effectively, they will need greater freedom of action, and will almost inevitably have to become free-standing corporate bodies able to exploit commercial opportunities, develop their land and property assets and generally react freely in the market place. (*The Listener*, 16 April 1987)

The Trust was established and has developed in a time when Parliamentary, bureaucratic and public scrutiny of statutory authorities' performance has been particularly intense. It accepts that it is unlikely ever to equate perfectly to Dr Cossons' concept of a free-standing corporate body reacting freely in the market place. However, it does believe that retention of its full status as a statutory authority managed by a Board responsible directly to its Minister is a vital ingredient in maintaining vitality. The Trust was therefore pleased to be informed by the Premier in April that 'in the foreseeable future I do not intend to pursue the Review Team's recommendation that the Trust become a Division of the Department for the Arts'.

The History Trust would also like to register its hope that a uniform Government policy will be developed on the question of admission charges to State-owned museums in South Australia. Some museums—of which the Migration and Settlement Museum is one—do not and cannot charge the public for admission to their exhibitions. Other museums—of which the Birdwood Mill and South Australian Maritime Museum are notable examples—are under constant pressure to increase admission charges. As its Director notes in his section of this Annual Report, the Maritime Museum has come in for particular criticism from members of the public for its admission charges. A more uniform and publicly stated Government policy on whether or not the public is to be charged to enter State museums in South Australia would assist the Trust and the staff of the Museums most affected by the present situation.

Divisional Overview

Looked at division by division, the History Trust presented no one profile during 1986-87. The Social History Museums and Maritime Museum Divisions were engaged for most of the year in opening their new museums and then accommodating themselves to the demands made on them by their many visitors. Staff of Old Parliament House continued the Museum's strong display program while resolving the shape of a replacement for the ageing 'Bound for South Australia' audio-visual program. At the Birdwood Mill staff confronted yet another year of meagre recurrent funding from the Government and the problems posed by an under-capitalised and haphazardly developed site. At Schuberts Farm staff were coping with the even more difficult trauma of adjusting to the closure of their museum and the unlikelihood of its being opened again under the aegis of the History Trust.

At the Head Office of the Trust, major changes to long standing staff arrangements took place with the Historian retiring and a change-over in Museums Officer following the incumbent's secondment to the Port Adelaide Railway Museum project.

Despite this variety of experiences within the organisation, the Trust as a whole underwent a discernible change of tempo. Ever since its establishment in early 1981, the Trust had been compelled to race to pick up various tasks thrust upon it year by year and in particular to meet the many deadlines set by the Jubilee 150 year of 1986. With 1986 come and gone the organisation has been able to turn its attention to more long-term planning and to the closer integration of the Trust's disparate parts.

This new museum was opened in December 1988. It is in Lipson Street, Port Adelaide, at the site of the historic Port Dock Station (1856). The Maritime Museum is close by.

A massive pavilion holds about 30 major items of locomotives and rollingstock, while in the old wooden goods shed a period goods train complete with its own steam engine and caboose is a highlight.

Outside, two steam engines operate special passenger trains. A 1'6" gauge steam engine 'Bub', built by the museum, hauls a miniature train around the 6 acre site. This journey takes the public on a tour passing numerous oddities along the way. Also a 3'6" gauge steam engine 'Peronne', chuffs to and fro hauling a full size train within the museum grounds.

A 1940s style 'East-West Express' cafeteria carriage provides refreshments in a unique atmosphere, while another carriage is used for light refreshments near the train station.

A book sales and souvenirs shop, open to shoppers off the street as well, provides a comprehensive range of railway books, postcards, and lots of different souvenirs.

One of the largest permanent model railways in Australia is housed within the pavilion and authentic railways and scenery of S.A. are displayed much to the delight of the young and not so young at heart.

A recreated 'break of gauge' station has been set up in the pavilion, with a complete 5'3" gauge train on one side and a 3'6" gauge train on the other.

Opening hours: Wednesday to Sundays and public holidays
10 am - 5 pm

* * * * *

MORTLOCK MISCELLANY

[Elizabeth Ho, Mortlock Librarian, has forwarded details of the Library's new publication, Mortlock Miscellany. Ed.]

With the demise of South Australiana and the Monthly list of publications of South Australian interest received in the State Library there was concern among the Mortlock Library staff that information regarding new material received by the Library was not readily available.

The recent purchase of a PC has enabled staff to change

this situation. Mortlock Miscellany will include published and archival acquisitions, as well as items of interest received by the J.D. Somerville Oral History Collection. We are aiming to make it a monthly publication, commencing September, 1988.

The distribution of the publication will be limited to organisations and key agencies. We are unable to send it to individuals, although it will always be available at the Reference Desk for staff and reader use.

Because this is a 'clearing house' service we encourage you to circulate/copy/distribute it, or to publish selections from it in your newsletters. That way the information will reach a wider audience.

We hope you will find this service a valuable one!

[A few examples of recent accessions follow. They are taken from the August and September issues. Ed.]

MATTINGLY, Christobel D.

Copies of correspondence and others papers relating to the publication "Survival in our Own Land" and the problems encountered. 1987. 2 cm.

WORLD WAR II

Map published by The Advertiser showing the War Zones in Europe together with resources of various countries. c. 1940. 1 item

FOX, Mem

Records consisting of files relating to various books, including "Possum Magic", "Just Like That", "Arabella", "Hattie and the Fox", "Sail Away" and "Wilfred". c. 1980-1988. 20 cm.

MELVILLE, Henry Dudley

Reminiscences of Henry D. Melville covering the years 1840-1877 and evidently intended for publication to support a claim on the government, describing pioneering work in the Coorong for the South Australian Company, bush service as a police trooper protecting overland parties, postings as Sub Collector of Customs at Robe and Port Caroline involving his assistance to shipwrecks, experiences as Chief Warden of the Northern Territory goldfields and subsequent Civil Service appointments relinquished on account of failing eyesight. 1887. 5 volumes. Manuscript

FAHRMANN, family

Further papers of the Faehrmann family of Hahndorf comprising Biblische Predigten für Landleute inscribed with birth and death dates, two Gesangbücher, ten family photographs and two cash books. 1793-1912, 1946-70. 25 cm. Manuscript and printed.

BYNG, Charles Henry John

Papers of Charles Henry Byng comprising his diary of a voyage with his wife and children aboard the Sir Edward Parry from Gravesend to Port Adelaide, 5 March to 21 June 1849, together with a family album of photographic portraits and two in memoriam cards. 1849-72. 2 volumes.

HETHERINGTON, Penelope

Further papers of Penelope Hetherington author of The Making of a Labour Politician a biography of her father Ron Loveday, comprising eighteen audio cassette recordings and transcripts of her interviews with Ron R. Loveday, Liza H. Loveday and Directors General of Education, minutes and correspondence relating to Ron R. Loveday's activities as president of the South Australian Wheatgrowers' Association and circular advertising a 'Back to Chandada' celebration. 1931-6, 1976-80, 1986. Manuscript, printed and audio cassette recording.

SUPPORTING ABORIGINAL RESEARCH: CURRENT INITIATIVES

IN THE MORTLOCK LIBRARY OF SOUTH AUSTRALIANA

A. Mortlock Aboriginal Holdings Project

The Mortlock Library holds a wealth of material relating to Aboriginal experience since white settlement. Church and Mission records, numerous photographs, and the records of Aboriginal organizations are among them. Because of our considerable archival processing backlog, a percentage of this material has been virtually inaccessible. With support from DLG and Bequest funds, an archivist and operating budget have been provided so that this material can be identified and processed onto PC data base. David Jury, the archivist has made excellent progress and the automated system he has devised is most effective. A full printout will be available from the Reference Desk on completion of the project in November.

A particularly satisfying aspect of this project is that it has been assisted by DLG Aboriginal trainees, Ethel Abdullah and Ricky Warrior.

B. Joint Copying Project, S.A. Museum/Mortlock Library

Following successful negotiations between the S.A. Museum and the Mortlock Library, a joint copying project has commenced.

The S.A. Museum Archives Aboriginal holdings are extensive, but only limited access is possible. This project will mean that the general public have access to this material through the Mortlock Library. Mortlock Bequest funds will support the copying effort, to be undertaken by the State Library Micrographics Section.

As part of the project agreement, there will be no material copied which in any way offends Aboriginal law or custom. In other words, only material which can be seen by any person will be available. The expert advice of S.A. Museum staff will come into play here. (Much of the material will be photographs).

Mark Agius, former Aboriginal trainee, and a CO1 in the Mortlock Library has won the position of the Administrative Assistant (CO2), and will administer the copying procedures over the next 6 months.

C. Aboriginal Family History Sources

Agreement in principle has been reached with both the Dept. of Environment and Planning, Aboriginal Heritage Branch and the S.A. Museum to provide indexes to Aboriginal genealogy information to the Mortlock Library. These are indexes to their photographic collections and other genealogy sources, and they will be made available at the Reference Desk. Access to the actual collections will be at the discretion of the holding agencies.

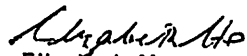
D. Mortlock Aboriginal Readers Services Project

The Mortlock Library is seeking to better interpret its Aboriginal holdings through the appointment of an Aboriginal Readers Services Officer from September 1988 until July 1989. The preparation of finding aids, research notes, and the provision of reader education activities for Aboriginal users will be the main responsibilities of the position.

This concentrated effort will build on the Education Officer's and the Reader Education team's achievements in support of Aboriginal Studies programmes, and the progress made in the archival holdings and the joint copying projects described above.

E. Co-operation with The Australian Institute of Aboriginal Studies, A.C.T.

I am holding discussions with the Library Director, Valerie Chapman concerning a microfilm exchange of relevant material and other potential areas of co-operation.


Elizabeth Ho
Mortlock Librarian

DOCUMENTS

GOOLWA, VICTOR HARBOR AND THE MURRAY MOUTH IN 1883 - III

[The third extract from the journalist Cornelius Proud's The Murray and Darling Trade in 1883 follows. He is looking at various proposals for opening the Murray mouth or cutting a canal to the sea.]

A description of Goolwa and Port Victor would be

incomplete without some reference to the opening of the Murray-mouth or a canal from the river to Port Victor. If either of these works were accomplished, what would South Australia not do with the river trade? In the agitation for what after all may only be a shadow we are in danger of losing the substance. The wiser course would be to secure the trade first, and then to turn our attention to the realization of a work which will certainly not fulfil all the anticipations that have been formed regarding it. In discussing the feasibility of providing direct communication between the river and the sea the nature of the country through which the channel must be cut is too frequently lost sight of. Between Goolwa and the sea is one long stretch of shifting sandhills. It was not always so, but the sheep with which the country at a very early date was stocked cut up the natural grasses, and the consequence is that with every gale from the south-west these sandhills alter their form and shift their position altogether.

In addition to this the evidence is conclusive that since settlement first began in that part of the colony the mouth of the river has shifted from half a mile to a mile. So as far as the opening of the Murray-mouth is concerned, the efforts of Sir Henry Young, previously referred to, show that such a work is not within the practicable. If a channel ten feet deep were dredged through it today, in all probability the strong swell of the ocean would silt it up within the next twenty-four hours.

A canal could be cut through this shifty sandy country to Victor Harbour, but it would be a costly undertaking and expensive to maintain, while the dues would probably not be much less than the present tariff on the Goolwa and Port Victor line, viz., 9d. per bale of wool or 5s. a ton.

In support of the canal scheme it is urged that the river boats would be able to get alongside the ocean steamers and tranship their cargoes directly, thereby effecting a considerable saving both in time and labour and charges. Undoubtedly, if this advantage would inevitably follow, a powerful argument would be in the hands of the supporters of the canal scheme; but there is a very substantial set-off. Although many of the large stations dump their wool, others, especially those that combine agriculture with pastoral pursuits, do not. This wool would have to be dumped before it could be shipped, and to do so it would have to go into the wool stores. Then the cargo of a steamer is often intended for twenty different consignees and as many diverse destinations, all of which would necessitate unloading and rearrangement before final shipment. These obstacles are not fatal to the canal scheme, but they tend to show that the principal effect of such a work would be to shift Goolwa a few miles nearer to Port Victor than it is at present.

* * * * *

THE STATE OF HISTORY

[The following brief extracts are from Beverly Kingston's article 'The Use and Function of Local History' in Locating Australia's Past: A practical guide to writing local history in New South Wales published by the Local History Co-ordination Project at the University of New South Wales. A commercial edition is forthcoming. Brian Samuels.]

When human beings lose their memories we say they are suffering from amnesia. The whole study of psychology is based on the links which persist in the human mind between experience, memory, and understanding. When a person forgets, distorts or falsifies what has happened in the past, that person is likely to be considered pathological, verging either on insanity or criminality. But when a community or a society neglects its past or ignores its collective memory, this seems of little consequence. It may even be interpreted as an indication of devotion to progress rather than a potentially dangerous state.

At last, however, there are signs that our long-held belief that in Australia progress is the antithesis to history may be changing. The two ideas, one focussed on the future, the other on the past, should never be seen as mutually exclusive, though they often have been seen this way. Indeed, the greater danger now is that progress will conscript history for its own purposes. Already we are seeing the uses to which land developers, for instance, can put a scrap of history. A sub-division overlooking a stretch of the coast where once he possibly moored is launched as 'Captain Arthur Phillip Estate'. Tourist promotions now make the most of every possible museum and historic site. New malls and shopping centres can be built to look 'historic' or feature an historical theme in their design and presentation.

\... The best history is history which is alive. It must have meaning to those living with it, either because they experience the past through it, or because they can see that the past adds value to the quality of their daily lives. History for its own sake is in danger of being forgotten history. Obviously this is a two way process in which local historians are vitally concerned. The past only has meaning when it is known, remembered, discussed, or considered as new decisions are being made. So local historians not only collect evidence and study or write about the past. They also become responsible for keeping memory alive. They are the ones who maintain the links between past and future, who by caring about their history make that history matter to others.

Many years ago at Beachport in the south-east of South Australia a Mr Bevilaque came to the town and set himself up as a shipping agent. With him came his young wife who some time later gave birth to a baby boy. She was keen to go back to England and take the baby with her to show her parents and friends. With that thought in mind a passage was booked for her on a sailing ship which was England-bound. To make sure that the baby would have adequate food on the voyage a milch goat was taken along. After some weeks the animal went dry and the captain of the vessel ordered that it be slaughtered as an unproductive goat was of little use aboard ship. This was done and the animal duly became part of the menu of the passengers and crew.

Years later Mrs Bevilaque again made the journey 'home' and on boarding the vessel and coming down to her first meal was surprised to find that she had been seated at the captain's table, which was quite an honour for any passenger. Being rather curious as to why she had been so favoured she asked the captain.

To her amazement he answered: "Madam - long ago you took passage on a ship with your baby. On that ship I was the cabin boy, and in those days cabin boys had a rough life to say the least of it. We received no pay and to stay alive we had to scrounge food wherever we could find it. Your milch goat provided me with magnificent substance when I milked her. It is for that reason that I can to-day thank you for that food."

Of course, nobody was unduly concerned about the fate of the unfortunate goat.

Jean Schmaal

* * * * *

NAIRNE - 150 YEARS OLD IN 1989

[If you thought the Jubilee 150 was over, think again. The next few years will see a steady trickle of South Australia's older settlements celebrating their sesquicentenaries.

Walkerville celebrated in October 1988. Nairne will be celebrating in 1989. The following text is reproduced with permission from a leaflet produced by the Nairne Community Action Association in 1983.]

Nairne was one of South Australia's earliest settlements, and still retains much of the charm of its beginnings, with many of the old buildings still in use today.

The town was founded by Matthew Smillie, from Leith in Scotland, who acquired 4000 acres of land in the Hay Valley in 1839. He settled many families on 80 acre lots, and set aside part of the land to establish the township, which he named Nairne after the maiden name of his wife, Elizabeth Corse Nairne, who came from a well-known family in Perthshire, Scotland.

The town was laid out with blocks set aside for school, church, market-place and cemetery, where the Smillie vault occupies a central position. There is a memorial plaque in the Old Market Place, and the first survey peg for the town is still in position in the footpath outside the Institute building. The Institute itself was not built until 1904, although other buildings were used for the purpose previously.

Across the road from the Miller's Arms hotel is the stump of a large gum tree, which used to spread right across the main street. It is said that prisoners being brought from the country to the city were chained to the tree while awaiting the change of guard from country to metropolitan police.

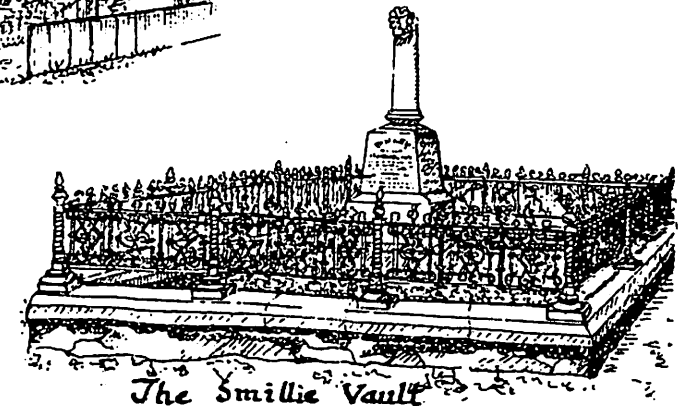
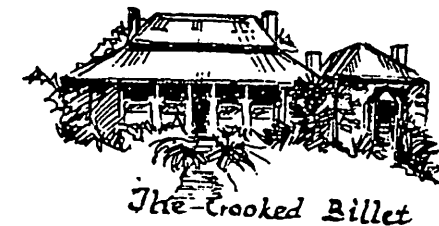
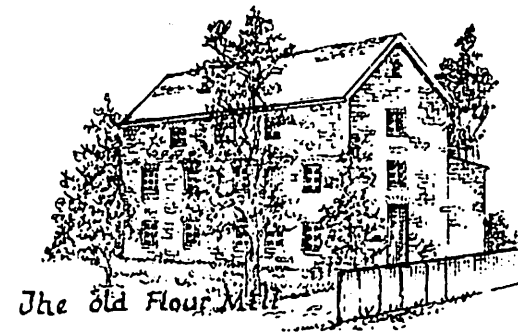
The wheat grown in the Nairne area was famous, winning the world championship three times between 1851 and 1908 (grown at Bald Hills, yield 70 lb. to the bushell). It is not surprising, therefore that the first flour produced in South Australia came from this area.

In 1840 John Dunn built a windmill in the Hay Valley, then later built two steam mills in Nairne, one which was built in 1846 still survives and is being restored as a private home. The town was really bustling in those days, with the mills running day and night in the season and up to thirty bullock wagons waiting to be unloaded..

The town was prosperous, with three hotels, many shops and businesses including a tannery, bootmakers, butchers and bakers, carriers and sawmills. The abundance of timber in the area provided fuel for two smelting works, which processed copper from Callington and Kanmantoo.

Timber also meant a ready supply of bark for tanning, so the first tannery south of Adelaide was established in the main street of Nairne in 1851, where it continued to operate until 1877. A house and shop were added in 1870, which are still in use today, although the shop sells antiques, not leather goods.

Another building of historic interest in Nairne is The Crooked Billet, now a house, formerly an hotel with an adjacent assembly room. In this room in 1857 Sir R.D. Torrens introduced the property principles which are known as Torrens Titles and are universally used for land ownership.



The arrival of the railway in 1884 added more colour and excitement to the town, with gangers' tents springing up over the hillsides.

Nairne remained the terminus for many years, and the railway is still busy, being on the main line to Melbourne. Nairne's main street was also the main route to Melbourne until the coming of the Freeway bypassed it, enabling the town to develop its character and identity as a charming place both to live in and visit, looking towards the future while maintaining its links with the historic past.

* * * * *

PRESENT HISTORY - CHANGING APPROACHES TO COMMUNITY ASSETS

The disposal of community/government assets usually provokes heated public debate. Even when the disposal can be justified from a State-wide perspective, the impact is often hard-felt by the specific community affected. The rise and fall of local communities is a significant theme in the State's history and for that reason I found the following article from the policy-maker's perspective of interest. It is reproduced from the Department of Housing and Construction's Report vol. 3, no. 4 (August 1988). The author is Dr Perry Burns, Manager Policy Development.

Brian Samuels

Public buildings and other infrastructure may look as if they are very long-lasting—and they are, but only with a great deal of care as to maintenance, repair, upgrading and replacement of worn sections—in other words, upkeep. There is the old joke about the farmer who was boasting about the lasting qualities of his chopping axe—"It's lasted over sixty years", he said, "and all it's had is six new heads and five new handles."

That's what the upkeep cost of public assets is all about—the replacement of those heads and handles.

For public housing, for example, the equivalent would be the replacement of the hot water service, the electrical wiring, the roof, the plumbing, electrical appliances, some kitchen upgrading, etc. When all these costs are calculated, it is found that because of physical wearing out or because of obsolescence and change of standards, etc., the replacement of the components of a house adds up to an amount equal to the original cost of construction roughly every 53 years. In other words just under 2% of the total value of the house is being "used up" every year.

Some public assets consist of components that have very long lives, like water and sewer pipes, while others, because of wear and tear and changing technology have to be replaced quite frequently, like hospital equipment. The series of parliamentary reports produced by the Public Accounts Committee on Asset Replacement showed the rate at which different public assets were being "used up":

On average, for every \$1 million of public assets constructed *each* year, the upkeep costs increase by \$23,000 *every* year. But we only have to pay these accruing costs when we decide to actually replace the assets or the worn out components

So, to contain these costs, a recent Government Task Force Report on Asset Management and Replacement, has recommended that agencies with existing assets (or parts of assets) which are under-utilised avoid converting them for non-essential purposes and pursue opportunities to dispose of them before they need replacement.

To take a practical example, schools designed to hold maybe 750 children which are now down to 200 or less, should be considered for closure. Fortunately, within the metropolitan area our schools are very closely spaced, so that amalgamation with neighbouring schools is a practical alternative.

Naturally, communities are very reluctant to lose any public assets to which they have become accustomed. But, with the replacement cost of the average primary school over \$4 million there are considerable savings to be made. In addition, disposal frequently frees up a prime site for provision of other, more needed community services.

The major point, however, is that as our public assets age we will be forced to use more and more community funds to pay the wear and tear and obsolescence costs that have built up in past years. The Public Accounts Committee Reports, reinforced by the Government Task Force, showed that in about ten to twelve years we will be spending all of our current capital construction money to replace existing assets, with none left over for new assets.

So we have a choice, if we use the money to replace assets that are not needed we will increasingly find that we will be unable to provide new communities with basic services and/or that the basic services currently accepted by the community will be disrupted.

In practical terms, we either close down assets that are no longer needed or we find ourselves driving on roads with potholes large enough to be measured in terms of double decker buses or to find the sewerage backing up in the bathroom. This is the reality of the high upkeep cost of public assets. SACON is looking at ways to extend the lives of existing public buildings and so to reduce the upkeep costs and postpone the day of reckoning when large scale replacement will be required. It is likely that these techniques may also have application to commercial buildings.

However, in both public and private life, whatever is saved by replacing cheaper, more will be saved if replacement can be avoided altogether.

NEW PUBLICATIONS

RECENT BOOKS ON MINING HISTORY

The last two years have seen several very useful publications by the Department of Mines and Energy. They include:

- J. Selby (ed.) South Australia's Mining Heritage
(1987) 203 pp.
- G. Drew & J. Jones Discovering Historic Kapunda
(1988) 52 pp \$2.95
- G. Drew Discovering Historic Burra
(1988) 56 pp \$3.95
- G.J. Drew Morphetts Enginehouse and the Cornish Beam Engine (1987) 51 pp \$6.95

All are high quality, well-designed publications, with the Burra and Kapunda booklets providing models for similar works on other significant towns. They are available from several Adelaide bookstores.

Other notable works include Ian Auhl's magnum opus The Story of the 'Monster Mine (District Council of Burra 1986) (475pp \$45.00) and Ron Gibbs' recent book on the history of the Adelaide Stock Exchange, Bulls Bears and Wildcats (Peacock Publications 1988) (518pp \$35.95 plus \$4.00 postage if bought from the Exchange).

Brian Samuels

* * * * *

Heritage Survey of Fleurieu Peninsula

[The following note is taken from Enplan (Department of Environment and Planning) December 1988. Ed.]

A Yankalilla grain store, a Port Elliott slab hut and a Victor Harbor inn are among eleven heritage buildings which have been highlighted for urgent preservation action by Departmental consultants in a recent report.

The Heritage Survey of the Fleurieu Peninsula was com-

pleted with State Heritage Fund support. It was produced by historians Alexandra Marsden, John Dallwitz and Susan Marsden of Heritage Investigations, and Rob and Jane Linn of Historical Consultants Pty, Ltd.

Among other findings were recommendations to:

- * place a number of sites and buildings assessed of State Heritage significance on the Register of State Heritage Items;
- * review a list of items assessed of 'local heritage significance' with a potential of being listed on the Heritage Register when more information becomes available;
- * promote the inclusion of the heritage items/inventory into local government plans; and
- * carry out archaeological surveys of ten southern sites, including a sawmill, a quarry, and a brick kiln ruin.

As well, the report urges that four 'thematic' surveys of South Australia be completed to assess significance of many heritage items and to establish conservation and interpretation priorities. These include surveys of water supply, including wells, reservoirs, pipelines, water towers and irrigation systems, coastal shipping sites, and stone and slate quarries.

State Heritage Branch Manager Jon Womersley said the recommendations will be assessed by the State Heritage Committee and evaluated by the Branch. Copies of the report are available from the Department's lower ground floor Community Information Centre, 55 Grenfell Street, Adelaide. Cost is \$8, plus postage.

* * * * *

Homefront

Most of the lectures delivered at the 'Homefront' conference were reproduced in the Society's 1988 Journal. They make an important contribution to our knowledge of South Australian history between 1939 and 1945.

These papers are now available as a separate publication from the bookshop at Old Parliament House, North Terrace, Adelaide 5000 (phone 212 6881). The pamphlet costs \$4.95 or \$6.00 with postage.

* * * * *

Collin Robjohns

My Several Lives: China, Geriatrics, Gardens

Published by the author, 3 The Crescent, Marryatville, SA 5068. Available for \$19.95 (including postage) or from most bookshops.

Dr Robjohns' memoir falls into three parts - the medical missionary in China, the specialist in geriatrics in Adelaide and the gardener. He has this to say:

"My reason for publication is that each section is, I believe, of some historic interest, especially that on China which deals with an epoch now ended, tells of a South Australian involvement in the Sino-Japanese war which has not been previously recorded.

It could be of interest to South Australian historians that South Australia has had almost 100 years of medical involvement with China. It began when Cecil John Davenport of Macclesfield was appointed to China in 1889, served until 1926 and was responsible for developing medical work in Shanghai resulting in a large and important hospital still functioning today.

Edward Joseph Stuckey graduated from Adelaide Medical School in 1905, served in China until 1939, built and developed a Chinese hospital in Tientsin which is also still functioning.

My own contribution was on a much more humble scale from 1935 - 1945.

After World War II, Dr Kenneth Hetzell, a leading Adelaide physician, served in China under UNRRA (United Nations Relief and Rehabilitation Administration). Today his son, Dr Basil Hetzell is a consultant to the Peoples Republic of China as an authority on iodine deficiency diseases."

In his foreword Sir Walter Crocker notes:

"Here is a book which is enjoyable as well as informative. It must rank among the least autobiographical and the most unegotistical autobiographies ever written. But the more the reader gets into it the more he will be struck by the fact that the author has a command of classical English uncommon in books today and too that he speaks with evident authority on the areas which formed the essential parts of his life and which form the substance of this book - the medical missionary in China, the Japanese occupation of China, Geriatrics in modern life and Gardens and Gardening."

* * * * *

DIARY OF EVENTS

Compiled by Susan Marsden, State Historian, History Trust of South Australia.

Monday, 16.1.89

Mortlock Library closes for major reorganisation of the collection. Opens 13.2.89

Friday, 20.1.89

The new Museum of Exploration, Heritage and Surveying open from 10 am to 3.30 pm. Location - Old Treasury building, corner Flinders and King William Streets. Admission free. Guided tours by arrangement - telephone N. Pincombe, 226 4033 or 226 4036

Monday, 23.1.89

S.A. Museum: last week of major travelling exhibition 'First Impressions: the British Discovery of Australia'.

Tuesday, 24.1.89

Old Parliament House - ongoing exhibition 'Women in Science'

Sunday, 12.2.89

Migration Museum. New exhibition 'The Chinese in South Australia'. Open to end of March